



The UNNIA SOFT collection originates in the combination of comfortable seats and upholstered backrests, with or without arms, with fixed or swivel bases. The seats and backrests can be upholstered in all the fabrics and leathers from the INCLASS swatch card. In keeping with the same philosophy applied to the rest of the UNNIA family, seats and backrests can be combined with one or two fabrics to create original combinations. The aluminium swivel bases are available in a polished, black or white finish. The fixed rod bases are finished in chrome or painted in all the colours from the INCLASS swatch card.

DESIGNER: Simon Pengelly



Simon Pengelly was born in Henley in the UK in 1967. When he was eight he started making furniture in his father's furniture workshop and won a prize for cabinetmaking at the age of 15. He went on to study at Rycotewood College and Kingston Polytechnic. Pengelly started his professional career as a designer at Conran Design Group. Moving on to Habitat's design team in 1990 and later coordinating the design and development of their furniture range as a freelancer in the late 90's. Pengelly set up his London based studio in 1993 and the studio now works for renowned firms in the UK, Spain, Italy, Holland, Scandinavia and the United States. Pengelly's understanding of how people use and relate to the objects around them and his affinity with materials and manufacturing processes, combined with a passionate desire to create production furniture with 'soul', has resulted in award-winning furniture that contains a wonderful mix of understated design, timeless spirit and clever engineering

SEAT AND BACKREST

They are manufactured with an inner steel structure covered in mould-injected CMHR high-density, high-resilience polyurethane foam. The backrest is produced with and without arms.



BASES



Four-star aluminium swivel base:

Structure manufactured from injection-moulded aluminium alloy. Available in a polished finish or coated in heat-hardened polyester paint in black or white.


Rod sled base:

Manufactured from 12-mm solid steel rod. It is finished in heat-hardened polyester paint in any of the colours from the INCLASS metallic finishes chart or in chrome.

Four-star aluminium swivel base

	Height	Seat height	Arm height	Width	Seat width	Depth	Seat depth	Weight (kg)	Fabric (m)
	75	40	–	64	64	65	50	13,6	1,9
UNNO410									
	75	40	57	74	64	65	50	15,9	2,5
UNNO420									

Rod sled base

	Height	Seat height	Arm height	Width	Seat width	Depth	Seat depth	Weight (kg)	Fabric (m)
	75	40	–	72	64	65	50	12,3	1,9
UNNO430									
	75	40	57	74	64	65	50	14,6	2,5
UNNO440									

METALLIC BASES



Black



White



Aluminum



Chromo



Coffee brown



Stone



Light grey



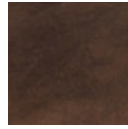
Mustard



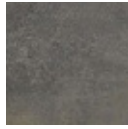
Water green



Marine green



Rust brown



Rust grey



Rose



Clay orange



Sky blue



Navi blue

CERTIFICATION & STANDARDS

- European UNE EN 16139 -2 Standard
- ANSI-BIFMAX5.1



- The quality management system of INCLASS is certified in accordance with ISO 9001:2008 in all the design, manufacturing and sales procedures of its products.

- INCLASS production processes are certified according to environmental ISO 14001:2004 quality standards and are carried out through the reduction of waste and energy consumption in order to minimise any impact on the environment.

WARRANTY

INCLASS MOBLES S.L. guarantees the products of the collection UNNIA SOFT against any manufacturing and materials defect up to a period of 5 years from the date of the invoice. All damages caused by misuse, accident as well as those having their cause on the lack of proper maintenance are excluded from this warranty. Natural attrition of fabric and upholstery foam is also excluded from this warranty. The customer must prove the date of purchase of the article with the invoice.

INCLASS replace or repair nonconforming products or components taking over the costs without any other liability.