

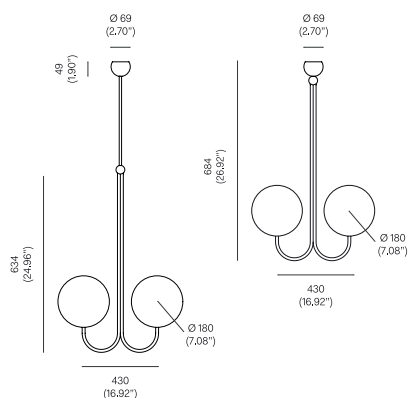


DOUBLE ANGLE PENDANT & CEILING MOUNTED, 2013

Satin Brass and Satin Nickel-plated brass.
Mouth Blown opaline glass.
Pendant rod length to order.

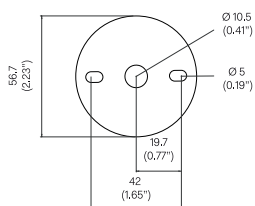


OVERALL DIMENSIONS

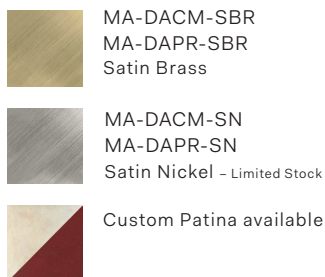


BACKPLATE DIMENSIONS

Mounting screws not included
5mm countersunk screw recommended



MATERIALS AND FINISHES



BULB SPECIFICATIONS

G9 3.5W LED bulb
330 lm / 2700K

PRODUCT SPECIFICATIONS

Input voltage: 120V / 240V
Maximum wattage: 40W per sphere
120V / 240V dimmable LED triac
Product weight: 6kg

Please supply required drop length of fixture,
measured from the ceiling to bottom fitting
at time of order.

Minimum total drop length 735mm.
Maximum total drop length 2635mm.

Please allow 25mm tolerance of drop length.

120V version supplied with paintable junction
box cover.

CLEANING INSTRUCTIONS

Before cleaning, lighting fixtures must
be turned off and unplugged from mains
electricity. Whilst cleaning please take care
and use the gloves provided.

Satin Brass: Use a Scotch Brite pad and gently
rub the pad in the direction of the grain.
Repeat until the natural patina is removed.
On rubbing the Scotch Brite to the brass,
grains will occur. The colour of the product
will temporarily get lighter until it re-oxidises.

Satin Nickel: Use a lightly damp soft dust
cloth and gently go over marks until clean.
Dry it afterwards with a soft dust cloth. Make
sure the product is completely dry before
switching the electricity on.

Opaline Glass: Remove the opaline glass from
the product. Using a lightly damp cloth, clean
only the outside of the sphere. Only put the
glass sphere back on the product once it is
fully dry.