

Bitta

Left corner module

bela rope

aluminium

by Rodolfo Dordoni

**kettal**

# Left corner module bela rope aluminium

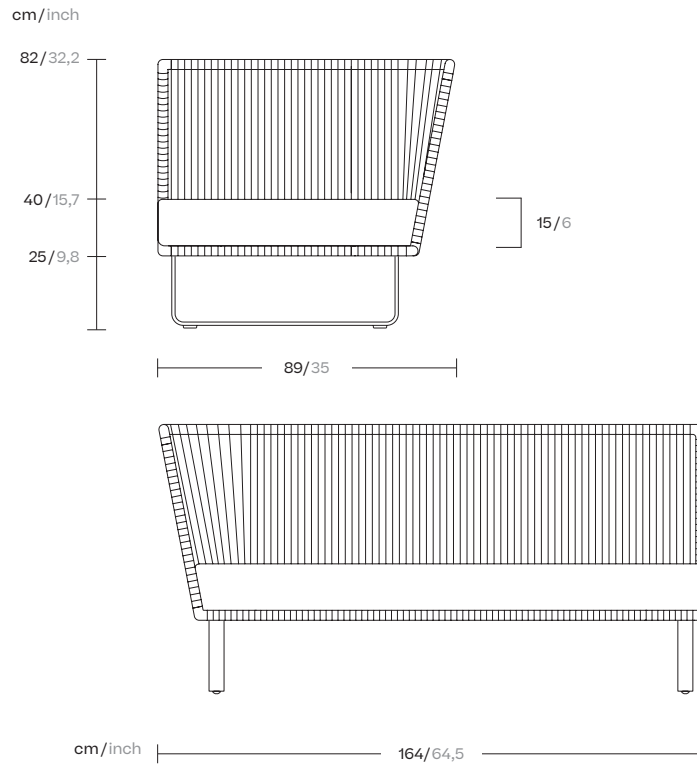
Designer  
Rodolfo Dordoni

Collection  
Bitta

Reference  
KS7001600

1/5

Kettal Bitta is characterised by a combination of aluminium frames, seats of braided polyester and comfortable cushions, teak and stone for the table tops. My aim was to create dense braiding that would still let the air through, reminiscent of the braiding of the ropes used to moor boats (hence the name Bitta, which means 'mooring' in Italian), which makes the pieces look lightweight but, at the same time, they look just like cosy nests in natural colours to sit back and relax in.



kettal

# Left corner module bela rope aluminium

Designer  
Rodolfo Dordoni

Collection  
Bitta

Reference  
KS7001600

2/5

## Materials

**Rope**  
Antioxy, Resist U.V, En-581-4, Easy Clean

**Fabric**  
Heavy Load 100.000 Cycles,  
Heavy Load Resistant  
1000 Decitex, Kettalize-It,  
Resist U.v. En-581-4, Easy Clean,  
Abrasion, Resistance 30.000  
Cycles, Quickdry

**Aluminium**  
Antioxy, Heavy Load, Resistant  
En-1421, Anti-Scratch, Easy  
Clean, Flame Retardant M1, Eco  
Friendly Ecoembes Recycling  
Process Foam UNI 9175 (Classe  
1IM), Anti-Mold, Flame Retardant  
M1

## Maintenance

Clean with mild soap using  
sponge or cloth. Be gentle  
while cleaning, do not scrub  
aggressively the fabric. Once  
cleaned please make sure you  
remove soap excess.

In case of aggressive stains  
clean with diluted household  
bleach.

Clean stains promptly. The  
longer it remains, more difficult  
will be to remove.

Once cleaned the fabric steam  
iron the fabric. Just use steam,  
be carefull NOT placing the  
iron directly in the fabric it will  
get damage.

## Legs Colour Options

## Terrain Paints (for Aluminium)



Chalk  
721



Bone  
678



Tuff  
103



Mist  
773



Flint  
734



London Clay  
729



Mahogany  
100



Carbon  
737



Lilac  
104



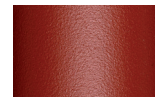
Feldspar  
082



Sepia  
088



Terra Rossa  
087



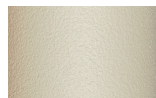
Magma  
086



Terracota  
085



Sahara  
139



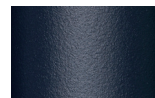
Camomile  
106



Aquamarine  
107



Cobalt  
089



Indigo  
094



Jade  
091



Onyx  
101



Juniper  
092



Amazon  
102



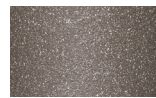
Bronze  
093



Corten  
727



Claystone  
741



Sand Storm  
132



Pumice  
131



Galena  
105



Manganese  
726

# Left corner module bela rope aluminium

Designer  
Rodolfo Dordoni

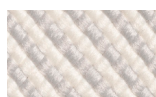
Collection  
Bitta

Reference  
KS7001600

3/5

## Frame Colour Options

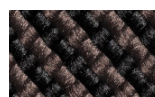
## Bela Rope



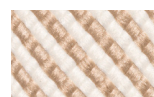
Snow Bird  
434



Silver Leaf  
421



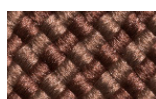
Woodland  
441



New Dawn  
452



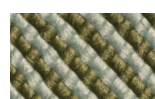
Honeysuckle  
453



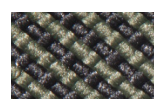
Forest Bell  
451



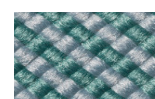
Jasmine  
431



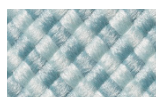
Oberon  
432



Ivy  
433



Esmerald  
425



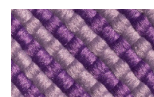
Blue River  
422



Alpina  
423



Romantika  
424



Wisteria  
414



Rosa  
413



Campsis  
411



Virginia  
412



# Left corner module bela rope aluminium

Designer  
Rodolfo Dordoni

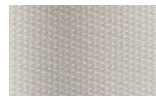
Collection  
Bitta

Reference  
KS7001600

4/5

## Seat & Back Cushion

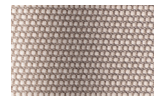
## Terrain Fabrics



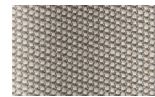
White Cliffs  
290



Dry Sand  
285



Porous Grey  
291



Limestone  
292



Fog  
289



Deer  
286



Wet Sand  
287



Cobblestone  
302



Cyprus Umber  
301



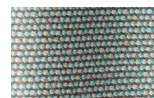
Loam  
297



Charcoal  
293



Arctic  
295



Fjord  
248



Cerulean  
314



Caribbean  
298



Atlantic  
311



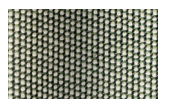
Rainforest  
312



Lagoon  
249



Cedar  
288



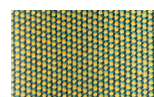
Moss  
296



Olive  
313



Autumn  
315



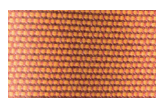
Summer Sky  
317



Golden Sand  
303



Flamma  
304



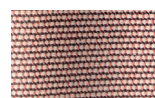
Sunrise  
299



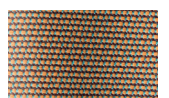
Saffron  
305



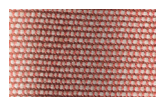
Burnt Sienna  
306



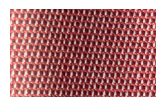
Ash Rose  
294



Cooper  
316



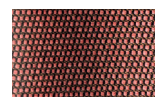
Dusk Pink  
307



Flamingo  
310



Coral  
309



Sandstone  
308

# Left corner module bela rope aluminium

Designer  
Rodolfo Dordoni

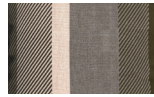
Collection  
Bitta

Reference  
KS7001600

5/5

## Back Cushion

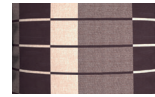
## Geometric Fabrics



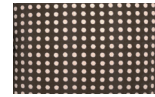
Umbra Brown  
192



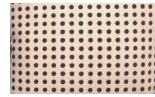
Dash Brown  
162



Shade Brown  
152



Dots Brown  
142



Dots Light Brown  
147



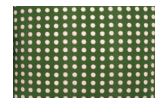
Umbra Green  
191



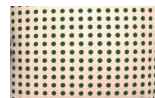
Dash Green  
161



Shade Green  
151



Dots Green  
141



Dots Light Green  
146



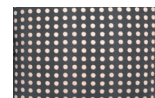
Umbra Grey  
193



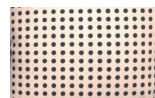
Dash Grey  
163



Shade Grey  
153



Dots Grey  
143



Dots Light Grey  
148



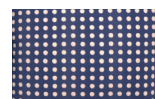
Umbra Blue  
190



Dash Blue  
160



Shade Blue  
150



Dots Blue  
140



Dots Light Blue  
145



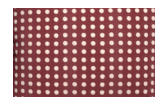
Umbra Red  
194



Dash Red  
164



Shade Red  
154



Dots Red  
144



Dots Light Red  
149

Bitta

Left corner module

bela rope

teak

by Rodolfo Dordoni

**kettal**

# Left corner module bela rope teak

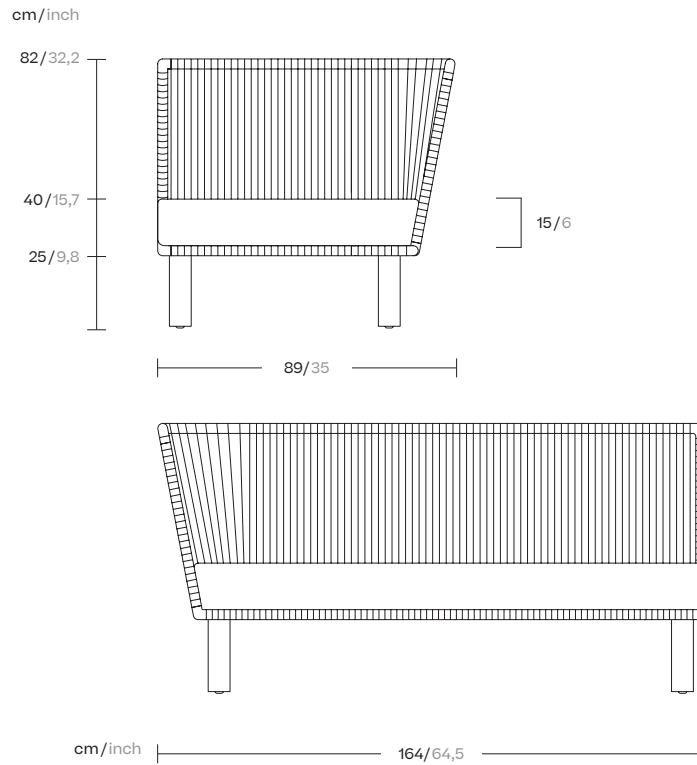
Designer  
Rodolfo Dordoni

Collection  
Bitta

Reference  
KS7001600

1/5

Kettal Bitta is characterised by a combination of aluminium frames, seats of braided polyester and comfortable cushions, teak and stone for the table tops. My aim was to create dense braiding that would still let the air through, reminiscent of the braiding of the ropes used to moor boats (hence the name Bitta, which means 'mooring' in Italian), which makes the pieces look lightweight but, at the same time, they look just like cosy nests in natural colours to sit back and relax in.



kettal



# Left corner module bela rope teak

Designer  
Rodolfo Dordoni

Collection  
Bitta

Reference  
KS7001600

2/5

## Materials

**Rope**  
Antioxy, Resist U.V, En-581-4, Easy Clean

**Fabric**  
Heavy Load 100.000 Cycles,  
Heavy Load Resistant  
1000 Decitex, Kettalize-It,  
Resist U.v. En-581-4, Easy Clean,  
Abrasion, Resistance 30.000  
Cycles, Quickdry

**Aluminium**  
Antioxy, Heavy Load, Resistant  
En-1421, Anti-Scratch, Easy  
Clean, Flame Retardant M1, Eco  
Friendly Ecoembes Recycling  
Process Foam UNI 9175 (Classe  
11M), Anti-Mold, Flame Retardant  
M1

**Teak**  
Teak A-Grade, Eco Friendly  
Oeko-Tek

## Maintenance

Clean with mild soap using  
sponge or cloth. Be gentle  
while cleaning, do not scrub  
aggressively the fabric. Once  
cleaned please make sure you  
remove soap excess.

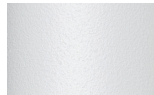
In case of aggressive stains  
clean with diluted household  
bleach.

Clean stains promptly. The  
longer it remains, more difficult  
will be to remove.

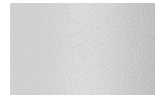
Once cleaned the fabric steam  
iron the fabric. Just use steam,  
be carefull NOT placing the  
iron directly in the fabric it will  
get damage.

## Legs Colour Options

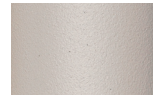
## Terrain Paints (for Aluminium)



Chalk  
721



Bone  
678



Tuff  
103



Mist  
773



Flint  
734



London Clay  
729



Mahogany  
100



Carbon  
737



Lilac  
104



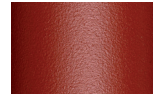
Feldspar  
082



Sepia  
088



Terra Rossa  
087



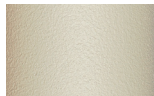
Magma  
086



Terracota  
085



Sahara  
139



Camomile  
106



Aquamarine  
107



Cobalt  
089



Indigo  
094



Jade  
091



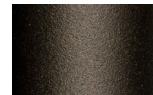
Onyx  
101



Juniper  
092



Amazon  
102



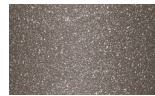
Bronze  
093



Corten  
727



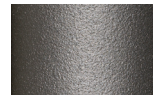
Claystone  
741



Sand Storm  
132



Pumice  
131



Galena  
105



Manganese  
726

## Legs Colour Options

## Teak



Teak  
904

# Left corner module bela rope teak

Designer  
Rodolfo Dordoni

Collection  
Bitta

Reference  
KS7001600

3/5

## Frame Colour Options

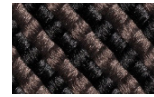
## Bela Rope



Snow Bird  
434



Silver Leaf  
421



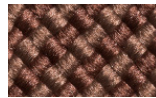
Woodland  
441



New Dawn  
452



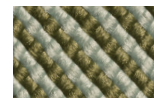
Honeysuckle  
453



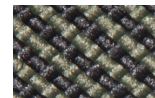
Forest Bell  
451



Jasmine  
431



Oberon  
432



Ivy  
433



Esmerald  
425



Blue River  
422



Alpina  
423



Romantika  
424



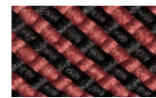
Wisteria  
414



Rosa  
413



Campsis  
411



Virginia  
412



# Left corner module bela rope teak

Designer  
Rodolfo Dordoni

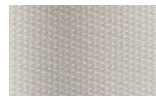
Collection  
Bitta

Reference  
KS7001600

4/5

## Seat & Back Cushion

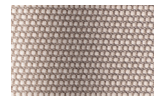
## Terrain Fabrics



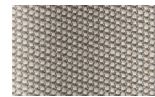
White Cliffs  
290



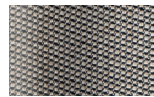
Dry Sand  
285



Porous Grey  
291



Limestone  
292



Fog  
289



Deer  
286



Wet Sand  
287



Cobblestone  
302



Cyprus Umber  
301



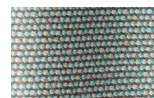
Loam  
297



Charcoal  
293



Arctic  
295



Fjord  
248



Cerulean  
314



Caribbean  
298



Atlantic  
311



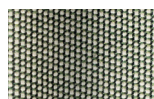
Rainforest  
312



Lagoon  
249



Cedar  
288



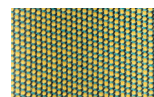
Moss  
296



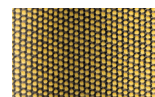
Olive  
313



Autumn  
315



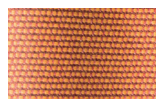
Summer Sky  
317



Golden Sand  
303



Flamma  
304



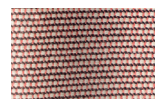
Sunrise  
299



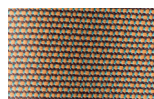
Saffron  
305



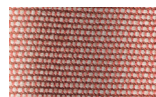
Burnt Sienna  
306



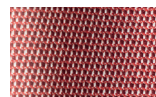
Ash Rose  
294



Cooper  
316



Dusk Pink  
307



Flamingo  
310



Coral  
309



Sandstone  
308

# Left corner module bela rope teak

Designer  
Rodolfo Dordoni

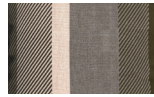
Collection  
Bitta

Reference  
KS7001600

5/5

## Back Cushion

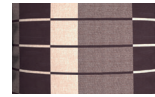
## Geometric Fabrics



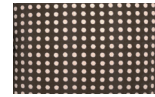
Umbra Brown  
192



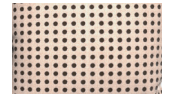
Dash Brown  
162



Shade Brown  
152



Dots Brown  
142



Dots Light Brown  
147



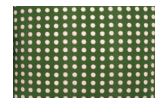
Umbra Green  
191



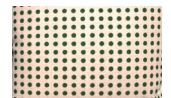
Dash Green  
161



Shade Green  
151



Dots Green  
141



Dots Light Green  
146



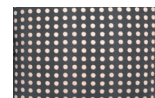
Umbra Grey  
193



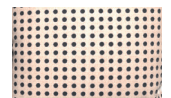
Dash Grey  
163



Shade Grey  
153



Dots Grey  
143



Dots Light Grey  
148



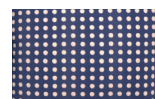
Umbra Blue  
190



Dash Blue  
160



Shade Blue  
150



Dots Blue  
140



Dots Light Blue  
145



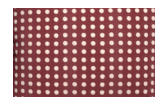
Umbra Red  
194



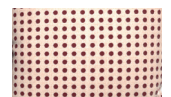
Dash Red  
164



Shade Red  
154



Dots Red  
144



Dots Light Red  
149

Bitta

Central module

bela rope

aluminium

by Rodolfo Dordoni

**kettal**

# Central module bela rope aluminium

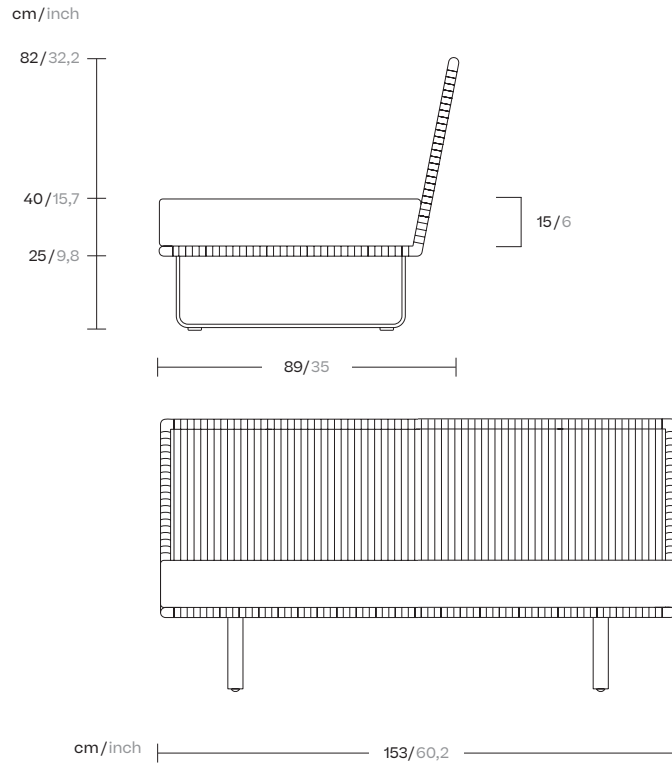
Designer  
Rodolfo Dordoni

Collection  
Bitta

Reference  
KS7002000

1/5

Kettal Bitta is characterised by a combination of aluminium frames, seats of braided polyester and comfortable cushions, teak and stone for the table tops. My aim was to create dense braiding that would still let the air through, reminiscent of the braiding of the ropes used to moor boats (hence the name Bitta, which means 'mooring' in Italian), which makes the pieces look lightweight but, at the same time, they look just like cosy nests in natural colours to sit back and relax in.



kettal



# Central Module Bela Rope Aluminium

Designer  
Rodolfo Dordoni

Collection  
Bitta

Reference  
KS7002000

2/5

## Materials

**Rope**  
Antioxy, Resist U.V, En-581-4, Easy Clean

**Fabric**  
Heavy Load 100.000 Cycles,  
Heavy Load Resistant  
1000 Decitex, Kettalize-It,  
Resist U.v. En-581-4, Easy Clean,  
Abrasion, Resistance 30.000  
Cycles, Quickdry

**Aluminium**  
Antioxy, Heavy Load, Resistant  
En-1421, Anti-Scratch, Easy  
Clean, Flame Retardant M1, Eco  
Friendly Ecoembes Recycling  
Process Foam UNI 9175 (Classe  
1IM), Anti-Mold, Flame Retardant  
M1

## Maintenance

Clean with mild soap using  
sponge or cloth. Be gentle  
while cleaning, do not scrub  
aggressively the fabric. Once  
cleaned please make sure you  
remove soap excess.

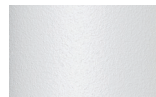
In case of aggressive stains  
clean with diluted household  
bleach.

Clean stains promptly. The  
longer it remains, more difficult  
will be to remove.

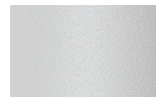
Once cleaned the fabric steam  
iron the fabric. Just use steam,  
be carefull NOT placing the  
iron directly in the fabric it will  
get damage.

## Legs Colour Options

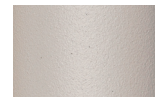
## Terrain Paints (for Aluminium)



Chalk  
721



Bone  
678



Tuff  
103



Mist  
773



Flint  
734



London Clay  
729



Mahogany  
100



Carbon  
737



Lilac  
104



Feldspar  
082



Sepia  
088



Terra Rossa  
087



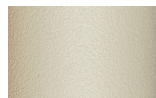
Magma  
086



Terracota  
085



Sahara  
139



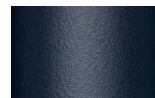
Camomile  
106



Aquamarine  
107



Cobalt  
089



Indigo  
094



Jade  
091



Onyx  
101



Juniper  
092



Amazon  
102



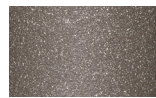
Bronze  
093



Corten  
727



Claystone  
741



Sand Storm  
132



Pumice  
131



Galena  
105



Manganese  
726

# Central module bela rope aluminium

Designer  
Rodolfo Dordoni

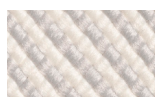
Collection  
Bitta

Reference  
KS7002000

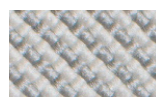
3/5

## Frame Colour Options

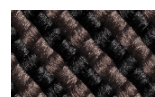
## Bela Rope



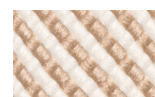
Snow Bird  
434



Silver Leaf  
421



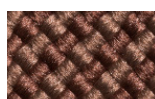
Woodland  
441



New Dawn  
452



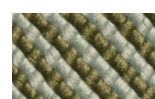
Honeysuckle  
453



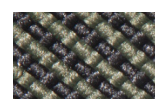
Forest Bell  
451



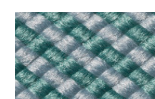
Jasmine  
431



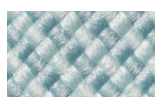
Oberon  
432



Ivy  
433



Esmerald  
425



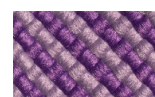
Blue River  
422



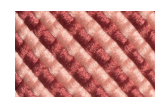
Alpina  
423



Romantika  
424



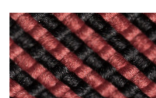
Wisteria  
414



Rosa  
413



Campsis  
411



Virginia  
412



# Central module bela rope aluminium

Designer  
Rodolfo Dordoni

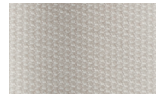
Collection  
Bitta

Reference  
KS7002000

4/5

## Seat & Back Cushion

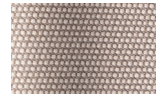
## Terrain Fabrics



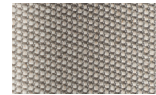
White Cliffs  
290



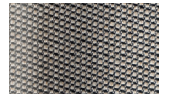
Dry Sand  
285



Porous Grey  
291



Limestone  
292



Fog  
289



Deer  
286



Wet Sand  
287



Cobblestone  
302



Cyprus Umber  
301



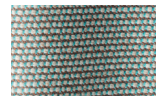
Loam  
297



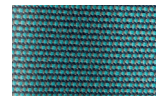
Charcoal  
293



Arctic  
295



Fjord  
248



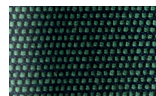
Cerulean  
314



Caribbean  
298



Atlantic  
311



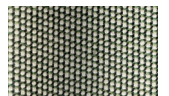
Rainforest  
312



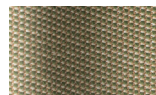
Lagoon  
249



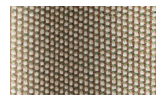
Cedar  
288



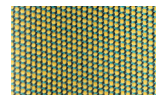
Moss  
296



Olive  
313



Autumn  
315



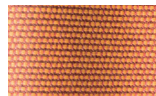
Summer Sky  
317



Golden Sand  
303



Flamma  
304



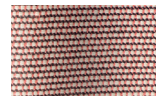
Sunrise  
299



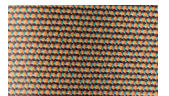
Saffron  
305



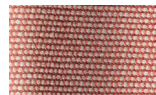
Burnt Sienna  
306



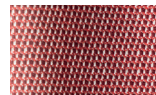
Ash Rose  
294



Cooper  
316



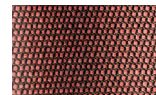
Dusk Pink  
307



Flamingo  
310



Coral  
309



Sandstone  
308

# Central module bela rope aluminium

Designer  
Rodolfo Dordoni

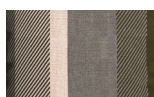
Collection  
Bitta

Reference  
KS7002000

5/5

## Back Cushion

## Geometric Fabrics



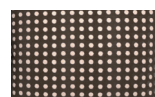
Umbra Brown  
192



Dash Brown  
162



Shade Brown  
152



Dots Brown  
142



Dots Light Brown  
147



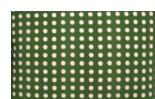
Umbra Green  
191



Dash Green  
161



Shade Green  
151



Dots Green  
141



Dots Light Green  
146



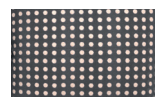
Umbra Grey  
193



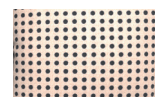
Dash Grey  
163



Shade Grey  
153



Dots Grey  
143



Dots Light Grey  
148



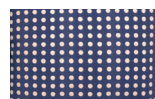
Umbra Blue  
190



Dash Blue  
160



Shade Blue  
150



Dots Blue  
140



Dots Light Blue  
145



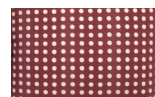
Umbra Red  
194



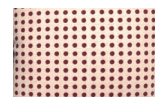
Dash Red  
164



Shade Red  
154



Dots Red  
144



Dots Light Red  
149

Bitta

Central module

bela rope

teak

by Rodolfo Dordoni

**kettal**

# Central module bela rope teak

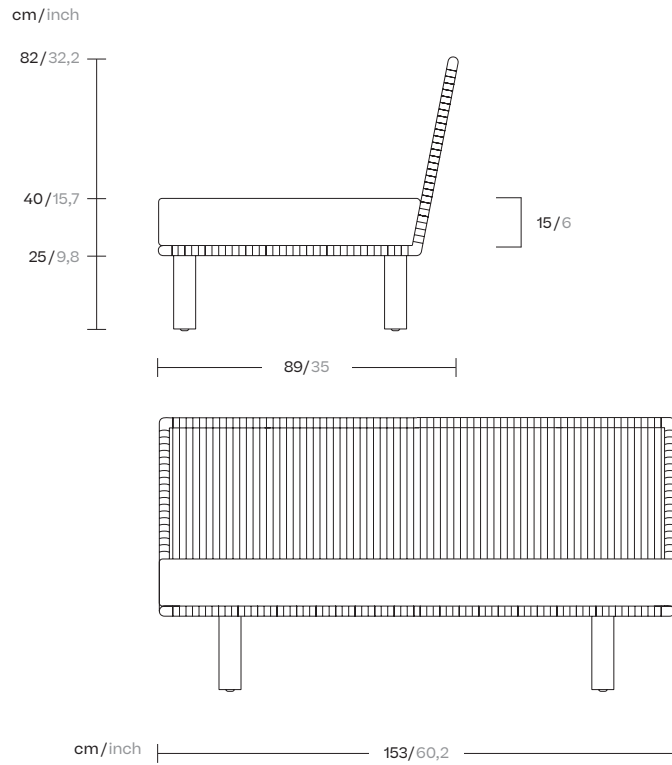
Designer  
Rodolfo Dordoni

Collection  
Bitta

Reference  
KS7002000

1/5

Kettal Bitta is characterised by a combination of aluminium frames, seats of braided polyester and comfortable cushions, teak and stone for the table tops. My aim was to create dense braiding that would still let the air through, reminiscent of the braiding of the ropes used to moor boats (hence the name Bitta, which means 'mooring' in Italian), which makes the pieces look lightweight but, at the same time, they look just like cosy nests in natural colours to sit back and relax in.



kettal

# Central module bela rope teak

Designer  
Rodolfo Dordoni

Collection  
Bitta

Reference  
KS7002000

2/5

## Materials

**Rope**  
Antioxy, Resist U.V, En-581-4, Easy Clean

**Fabric**  
Heavy Load 100.000 Cycles, Heavy Load Resistant 1000 Decitex, Kettalize-It, Resist U.v. En-581-4, Easy Clean, Abrasion, Resistance 30.000 Cycles, Quickdry

**Aluminium**  
Antioxy, Heavy Load, Resistant En-1421, Anti-Scratch, Easy Clean, Flame Retardant M1, Eco Friendly Ecoembes Recycling Process Foam UNI 9175 (Classe 11M), Anti-Mold, Flame Retardant M1

**Teak**  
Teak A-Grade, Eco Friendly Oeko-Tek

## Maintenance

Clean with mild soap using sponge or cloth. Be gentle while cleaning, do not scrub aggressively the fabric. Once cleaned please make sure you remove soap excess.

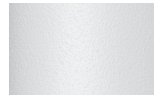
In case of aggressive stains clean with diluted household bleach.

Clean stains promptly. The longer it remains, more difficult will be to remove.

Once cleaned the fabric steam iron the fabric. Just use steam, be carefull NOT placing the iron directly in the fabric it will get damage.

## Legs Colour Options

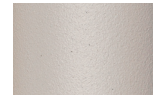
## Terrain Paints (for Aluminium)



Chalk  
721



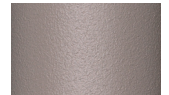
Bone  
678



Tuff  
103



Mist  
773



Flint  
734



London Clay  
729



Mahogany  
100



Carbon  
737



Lilac  
104



Feldspar  
082



Sepia  
088



Terra Rossa  
087



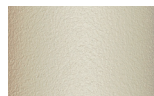
Magma  
086



Terracota  
085



Sahara  
139



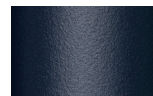
Camomile  
106



Aquamarine  
107



Cobalt  
089



Indigo  
094



Jade  
091



Onyx  
101



Juniper  
092



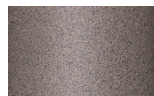
Amazon  
102



Bronze  
093



Corten  
727



Claystone  
741



Sand Storm  
132



Pumice  
131



Galena  
105



Manganese  
726

## Legs Colour Options

## Teak



Teak  
904



# Central module bela rope teak

Designer  
Rodolfo Dordoni

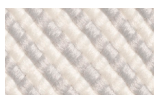
Collection  
Bitta

Reference  
KS7002000

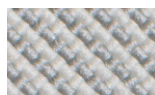
3/5

## Frame Colour Options

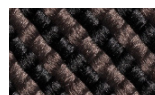
## Bela Rope



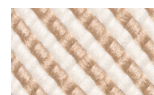
Snow Bird  
434



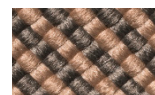
Silver Leaf  
421



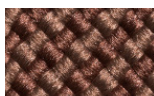
Woodland  
441



New Dawn  
452



Honeysuckle  
453



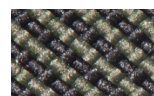
Forest Bell  
451



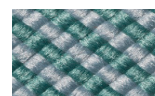
Jasmine  
431



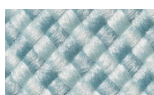
Oberon  
432



Ivy  
433



Esmerald  
425



Blue River  
422



Alpina  
423



Romantika  
424



Wisteria  
414



Rosa  
413



Campsis  
411



Virginia  
412



# Central module bela rope teak

Designer  
Rodolfo Dordoni

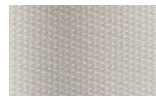
Collection  
Bitta

Reference  
KS7002000

4/5

## Seat & Back Cushion

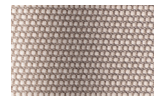
## Terrain Fabrics



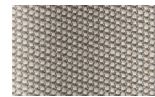
White Cliffs  
290



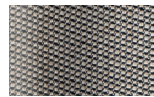
Dry Sand  
285



Porous Grey  
291



Limestone  
292



Fog  
289



Deer  
286



Wet Sand  
287



Cobblestone  
302



Cyprus Umber  
301



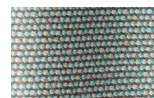
Loam  
297



Charcoal  
293



Arctic  
295



Fjord  
248



Cerulean  
314



Caribbean  
298



Atlantic  
311



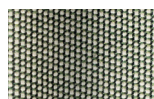
Rainforest  
312



Lagoon  
249



Cedar  
288



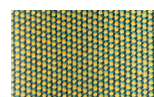
Moss  
296



Olive  
313



Autumn  
315



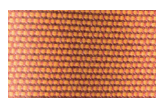
Summer Sky  
317



Golden Sand  
303



Flamma  
304



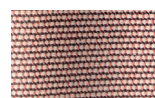
Sunrise  
299



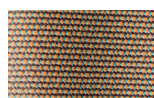
Saffron  
305



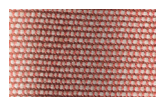
Burnt Sienna  
306



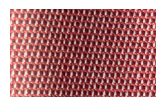
Ash Rose  
294



Cooper  
316



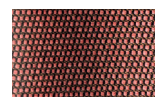
Dusk Pink  
307



Flamingo  
310



Coral  
309



Sandstone  
308

# Central module bela rope teak

Designer  
Rodolfo Dordoni

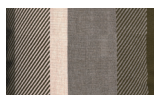
Collection  
Bitta

Reference  
KS7002000

5/5

## Back Cushion

## Geometric Fabrics



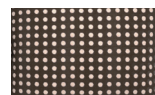
Umbra Brown  
192



Dash Brown  
162



Shade Brown  
152



Dots Brown  
142



Dots Light Brown  
147



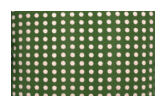
Umbra Green  
191



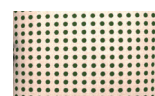
Dash Green  
161



Shade Green  
151



Dots Green  
141



Dots Light Green  
146



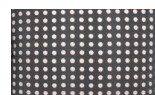
Umbra Grey  
193



Dash Grey  
163



Shade Grey  
153



Dots Grey  
143



Dots Light Grey  
148



Umbra Blue  
190



Dash Blue  
160



Shade Blue  
150



Dots Blue  
140



Dots Light Blue  
145



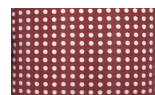
Umbra Red  
194



Dash Red  
164



Shade Red  
154



Dots Red  
144



Dots Light Red  
149

Bitta

Right corner module

bela rope

aluminium

by Rodolfo Dordoni

**kettal**

# Right corner module bela rope aluminium

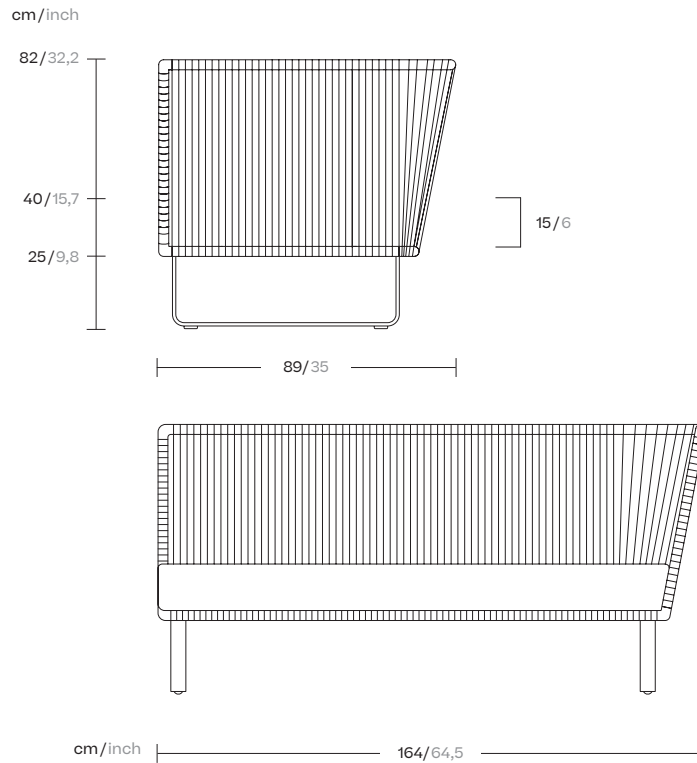
Designer  
Rodolfo Dordoni

Collection  
Bitta

Reference  
KS7001800

1/5

Kettal Bitta is characterised by a combination of aluminium frames, seats of braided polyester and comfortable cushions, teak and stone for the table tops. My aim was to create dense braiding that would still let the air through, reminiscent of the braiding of the ropes used to moor boats (hence the name Bitta, which means 'mooring' in Italian), which makes the pieces look lightweight but, at the same time, they look just like cosy nests in natural colours to sit back and relax in.



kettal



# Right corner module bela rope aluminium

Designer  
Rodolfo Dordoni

Collection  
Bitta

Reference  
KS7001800

2/5

## Materials

**Rope**  
Antioxy, Resist U.V, En-581-4, Easy Clean

**Fabric**  
Heavy Load 100.000 Cycles,  
Heavy Load Resistant  
1000 Decitex, Kettalize-It,  
Resist U.v. En-581-4, Easy Clean,  
Abrasion, Resistance 30.000  
Cycles, Quickdry

**Aluminium**  
Antioxy, Heavy Load, Resistant  
En-1421, Anti-Scratch, Easy  
Clean, Flame Retardant M1, Eco  
Friendly Ecoembes Recycling  
Process Foam UNI 9175 (Classe  
1IM), Anti-Mold, Flame Retardant  
M1

## Maintenance

Clean with mild soap using  
sponge or cloth. Be gentle  
while cleaning, do not scrub  
aggressively the fabric. Once  
cleaned please make sure you  
remove soap excess.

In case of aggressive stains  
clean with diluted household  
bleach.

Clean stains promptly. The  
longer it remains, more difficult  
will be to remove.

Once cleaned the fabric steam  
iron the fabric. Just use steam,  
be carefull NOT placing the  
iron directly in the fabric it will  
get damage.

## Legs Colour Options

## Terrain Paints (for Aluminium)



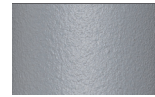
Chalk  
721



Bone  
678



Tuff  
103



Mist  
773



Flint  
734



London Clay  
729



Mahogany  
100



Carbon  
737



Lilac  
104



Feldspar  
082



Sepia  
088



Terra Rossa  
087



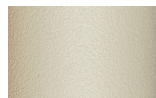
Magma  
086



Terracota  
085



Sahara  
139



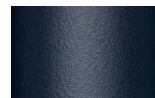
Camomile  
106



Aquamarine  
107



Cobalt  
089



Indigo  
094



Jade  
091



Onyx  
101



Juniper  
092



Amazon  
102



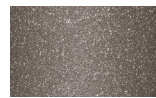
Bronze  
093



Corten  
727



Claystone  
741



Sand Storm  
132



Pumice  
131



Galena  
105



Manganese  
726

# Right corner module bela rope aluminium

Designer  
Rodolfo Dordoni

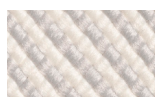
Collection  
Bitta

Reference  
KS7001800

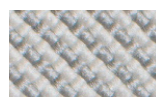
3/5

## Frame Colour Options

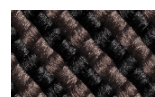
## Bela Rope



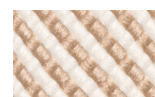
Snow Bird  
434



Silver Leaf  
421



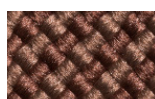
Woodland  
441



New Dawn  
452



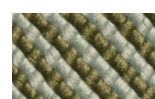
Honeysuckle  
453



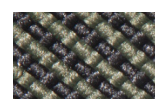
Forest Bell  
451



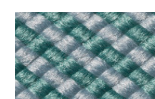
Jasmine  
431



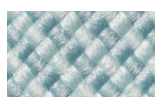
Oberon  
432



Ivy  
433



Esmerald  
425



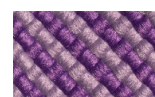
Blue River  
422



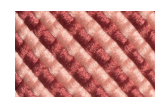
Alpina  
423



Romantika  
424



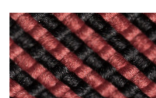
Wisteria  
414



Rosa  
413



Campsis  
411



Virginia  
412



# Right corner module bela rope aluminium

Designer  
Rodolfo Dordoni

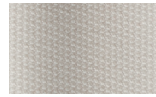
Collection  
Bitta

Reference  
KS7001800

4/5

## Seat & Back Cushion

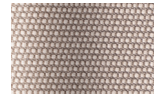
## Terrain Fabrics



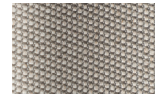
White Cliffs  
290



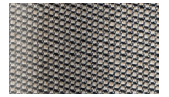
Dry Sand  
285



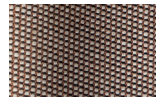
Porous Grey  
291



Limestone  
292



Fog  
289



Deer  
286



Wet Sand  
287



Cobblestone  
302



Cyprus Umber  
301



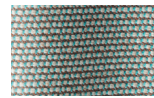
Loam  
297



Charcoal  
293



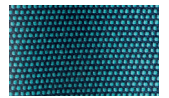
Arctic  
295



Fjord  
248



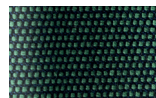
Cerulean  
314



Caribbean  
298



Atlantic  
311



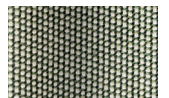
Rainforest  
312



Lagoon  
249



Cedar  
288



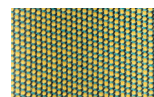
Moss  
296



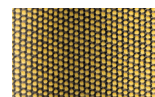
Olive  
313



Autumn  
315



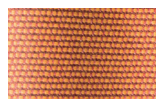
Summer Sky  
317



Golden Sand  
303



Flamma  
304



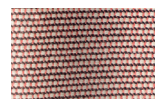
Sunrise  
299



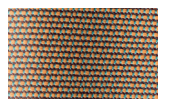
Saffron  
305



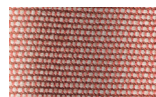
Burnt Sienna  
306



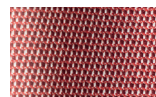
Ash Rose  
294



Cooper  
316



Dusk Pink  
307



Flamingo  
310



Coral  
309



Sandstone  
308

# Right corner module bela rope aluminium

Designer  
Rodolfo Dordoni

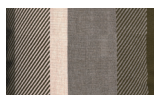
Collection  
Bitta

Reference  
KS7001800

5/5

## Back Cushion

## Geometric Fabrics



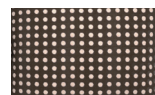
Umbra Brown  
192



Dash Brown  
162



Shade Brown  
152



Dots Brown  
142



Dots Light Brown  
147



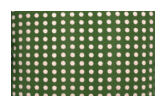
Umbra Green  
191



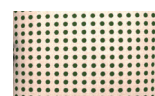
Dash Green  
161



Shade Green  
151



Dots Green  
141



Dots Light Green  
146



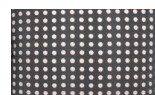
Umbra Grey  
193



Dash Grey  
163



Shade Grey  
153



Dots Grey  
143



Dots Light Grey  
148



Umbra Blue  
190



Dash Blue  
160



Shade Blue  
150



Dots Blue  
140



Dots Light Blue  
145



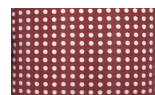
Umbra Red  
194



Dash Red  
164



Shade Red  
154



Dots Red  
144



Dots Light Red  
149

Bitta

Right corner module

bela rope

teak

by Rodolfo Dordoni

**kettal**

# Right corner module bela rope teak

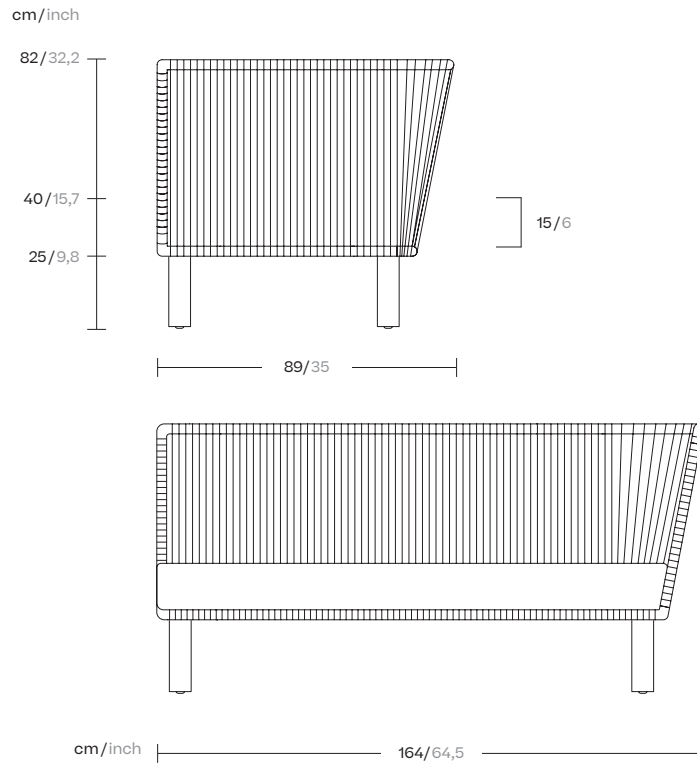
Designer  
Rodolfo Dordoni

Collection  
Bitta

Reference  
KS7001800

1/5

Kettal Bitta is characterised by a combination of aluminium frames, seats of braided polyester and comfortable cushions, teak and stone for the table tops. My aim was to create dense braiding that would still let the air through, reminiscent of the braiding of the ropes used to moor boats (hence the name Bitta, which means 'mooring' in Italian), which makes the pieces look lightweight but, at the same time, they look just like cosy nests in natural colours to sit back and relax in.



kettal



# Right corner module bela rope teak

Designer  
Rodolfo Dordoni

Collection  
Bitta

Reference  
KS7001800

2/5

## Materials

**Rope**  
Antioxy, Resist U.V, En-581-4, Easy Clean

**Fabric**  
Heavy Load 100.000 Cycles,  
Heavy Load Resistant  
1000 Decitex, Kettalize-It,  
Resist U.v. En-581-4, Easy Clean,  
Abrasion, Resistance 30.000  
Cycles, Quickdry

**Aluminium**  
Antioxy, Heavy Load, Resistant  
En-1421, Anti-Scratch, Easy  
Clean, Flame Retardant M1, Eco  
Friendly Ecoembes Recycling  
Process Foam UNI 9175 (Classe  
11M), Anti-Mold, Flame Retardant  
M1

**Teak**  
Teak A-Grade, Eco Friendly  
Oeko-Tek

## Maintenance

Clean with mild soap using  
sponge or cloth. Be gentle  
while cleaning, do not scrub  
aggressively the fabric. Once  
cleaned please make sure you  
remove soap excess.

In case of aggressive stains  
clean with diluted household  
bleach.

Clean stains promptly. The  
longer it remains, more difficult  
will be to remove.

Once cleaned the fabric steam  
iron the fabric. Just use steam,  
be carefull NOT placing the  
iron directly in the fabric it will  
get damage.

## Legs Colour Options

## Terrain Paints (for Aluminium)



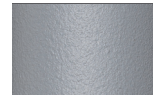
Chalk  
721



Bone  
678



Tuff  
103



Mist  
773



Flint  
734



London Clay  
729



Mahogany  
100



Carbon  
737



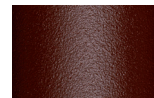
Lilac  
104



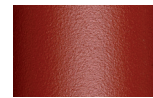
Feldspar  
082



Sepia  
088



Terra Rossa  
087



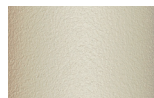
Magma  
086



Terracota  
085



Sahara  
139



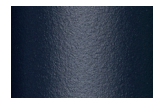
Camomile  
106



Aquamarine  
107



Cobalt  
089



Indigo  
094



Jade  
091



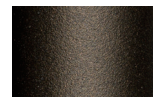
Onyx  
101



Juniper  
092



Amazon  
102



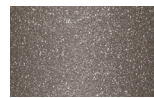
Bronze  
093



Corten  
727



Claystone  
741



Sand Storm  
132



Pumice  
131



Galena  
105



Manganese  
726

## Legs Colour Options

## Teak



Teak  
904



# Right corner module bela rope teak

Designer  
Rodolfo Dordoni

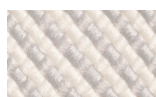
Collection  
Bitta

Reference  
KS7001800

3/5

## Frame Colour Options

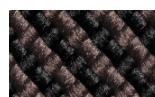
## Bela Rope



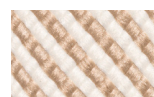
Snow Bird  
434



Silver Leaf  
421



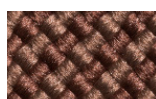
Woodland  
441



New Dawn  
452



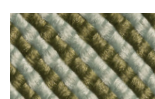
Honeysuckle  
453



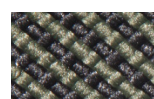
Forest Bell  
451



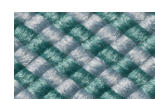
Jasmine  
431



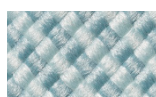
Oberon  
432



Ivy  
433



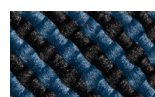
Esmerald  
425



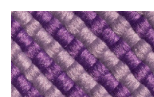
Blue River  
422



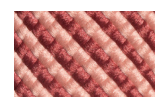
Alpina  
423



Romantika  
424



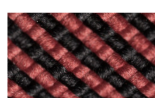
Wisteria  
414



Rosa  
413



Campsis  
411



Virginia  
412

# Right corner module bela rope teak

Designer  
Rodolfo Dordoni

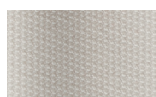
Collection  
Bitta

Reference  
KS7001800

4/5

## Seat & Back Cushion

## Terrain Fabrics



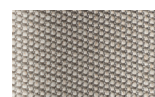
White Cliffs  
290



Dry Sand  
285



Porous Grey  
291



Limestone  
292



Fog  
289



Deer  
286



Wet Sand  
287



Cobblestone  
302



Cyprus Umber  
301



Loam  
297



Charcoal  
293



Arctic  
295



Fjord  
248



Cerulean  
314



Caribbean  
298



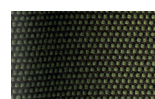
Atlantic  
311



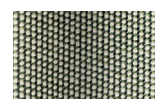
Rainforest  
312



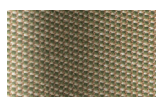
Lagoon  
249



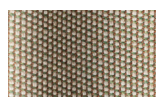
Cedar  
288



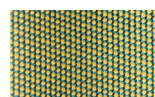
Moss  
296



Olive  
313



Autumn  
315



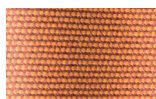
Summer Sky  
317



Golden Sand  
303



Flamma  
304



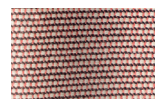
Sunrise  
299



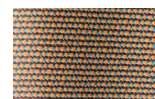
Saffron  
305



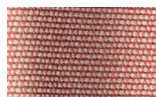
Burnt Sienna  
306



Ash Rose  
294



Cooper  
316



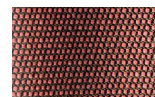
Dusk Pink  
307



Flamingo  
310



Coral  
309



Sandstone  
308

# Right corner module bela rope teak

Designer  
Rodolfo Dordoni

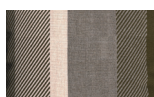
Collection  
Bitta

Reference  
KS7001800

5/5

## Back Cushion

## Geometric Fabrics



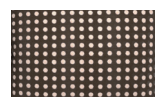
Umbra Brown  
192



Dash Brown  
162



Shade Brown  
152



Dots Brown  
142



Dots Light Brown  
147



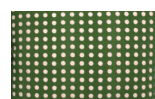
Umbra Green  
191



Dash Green  
161



Shade Green  
151



Dots Green  
141



Dots Light Green  
146



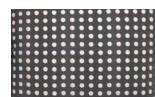
Umbra Grey  
193



Dash Grey  
163



Shade Grey  
153



Dots Grey  
143



Dots Light Grey  
148



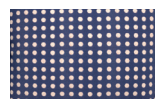
Umbra Blue  
190



Dash Blue  
160



Shade Blue  
150



Dots Blue  
140



Dots Light Blue  
145



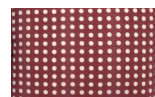
Umbra Red  
194



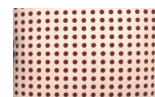
Dash Red  
164



Shade Red  
154



Dots Red  
144



Dots Light Red  
149