

Vieques

Left corner module

by Patricia Urquiola

kettal

Left corner module

Designer
Patricia Urquiola

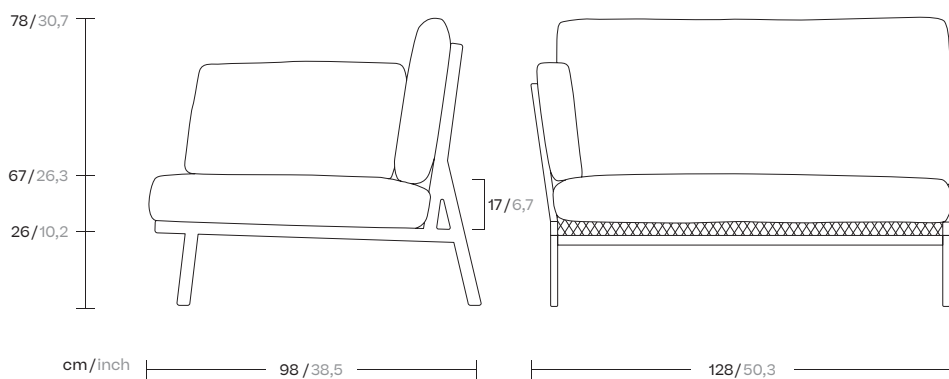
Collection
Vieques

Reference
KS4100500

1/4

Kettal Vieques is a collection characterised by the combination of an aluminium frame with a new and revolutionary three-dimensional fabric, Nido d'Ape, with exceptional technical features, created especially for this collection and exclusively for Kettal.

cm/inch



kettal

Left corner module

Designer
Patricia Urquiola

Collection
Vieques

Reference
KS4100500

2/4

Materials

Aluminium

Antioxy, Heavy Load, Resistant En-1421, Kettalize-It, Anti-Scratch, Easy Clean, Flame Retardant M1, Eco Friendly Ecoembes Recycling Process

Porotex Fabric Special, Laminated Fabric

Heavy Load 100.000 Cycles, Heavy Load Resistant 1000 Decitex, Kettalize-It, Resist U.v. En-581-4, Easy Clean, Abrasion, Resistance 30.000 Cycles, Quickdry

Maintenance

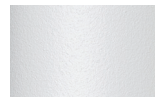
Clean with mild soap using sponge or cloth. Be gentle while cleaning, do not scrub aggressively the fabric. Once cleaned please make sure you remove soap excess.

In case of aggressive stains clean with diluted household bleach.

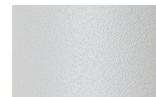
Clean stains promptly. The longer it remains, more difficult will be to remove.

Once cleaned the fabric steam iron the fabric. Just use steam, be carefull NOT placing the iron directly in the fabric it will get damage.

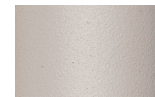
Frame Colour Options



Chalk
721



Bone
678



Tuff
103



Mist
773



Flint
734



London Clay
729



Mahogany
100



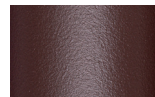
Carbon
737



Lilac
104



Feldspar
082



Sepia
088



Terra Rossa
087



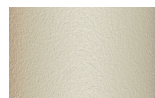
Magma
086



Terracota
085



Sahara
139



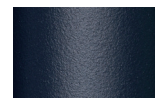
Camomile
106



Aquamarine
107



Cobalt
089



Indigo
094



Jade
091



Onyx
101



Juniper
092



Amazon
102



Bronze
093



Corten
727



Claystone
741



Sand Storm
132



Pumice
131



Galena
105



Manganese
726

Left corner module

Designer
Patricia Urquiola

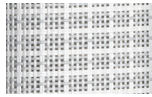
Collection
Vieques

Reference
KS4100500

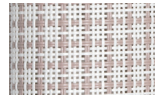
3/4

Fabric Options

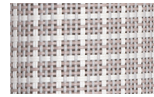
Porotex Parallel Fabrics



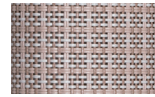
White Anemone
527



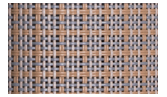
Lace Coral
528



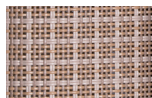
Padina
564



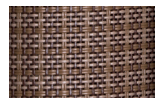
Saline
571



Alaria
572



Sponge
536



Fucus
537



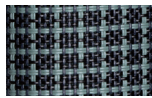
Urchin
547



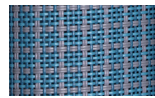
Kelp
556



Turtle Grass
553



Deep Ocean
570



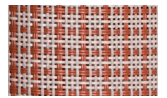
Winter Sea
569



Xenia
568



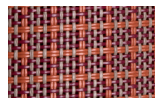
Plumaria
567



Irish Moss
559



Coral
562



Dulse
565

Left corner module

Designer
Patricia Urquiola

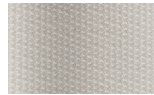
Collection
Vieques

Reference
KS4100500

4/4

Seat / Back / Arm Cushion
Fabric Options

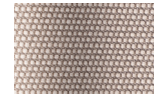
Terrain Fabrics Laminate



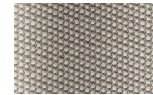
White Cliffs
290



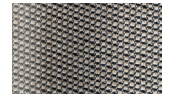
Dry Sand
285



Porous Grey
291



Limestone
292



Fog
289



Deer
286



Wet Sand
287



Cobblestone
302



Cyprus Umber
301



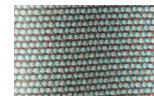
Loam
297



Charcoal
293



Arctic
295



Fjord
248



Cerulean
314



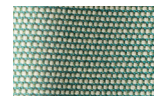
Caribbean
298



Atlantic
311



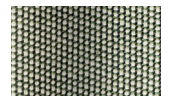
Rainforest
312



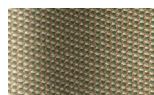
Lagoon
249



Cedar
288



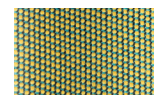
Moss
296



Olive
313



Autumn
315



Summer Sky
317



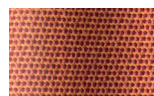
Golden Sand
303



Flamma
304



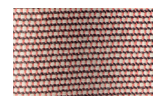
Sunrise
299



Saffron
305



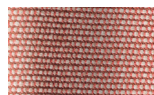
Burnt Sienna
306



Ash Rose
294



Cooper
316



Dusk Pink
307



Flamingo
310



Coral
309



Sandstone
308

Vieques

Right corner module

by Patricia Urquiola

kettal

Right corner module

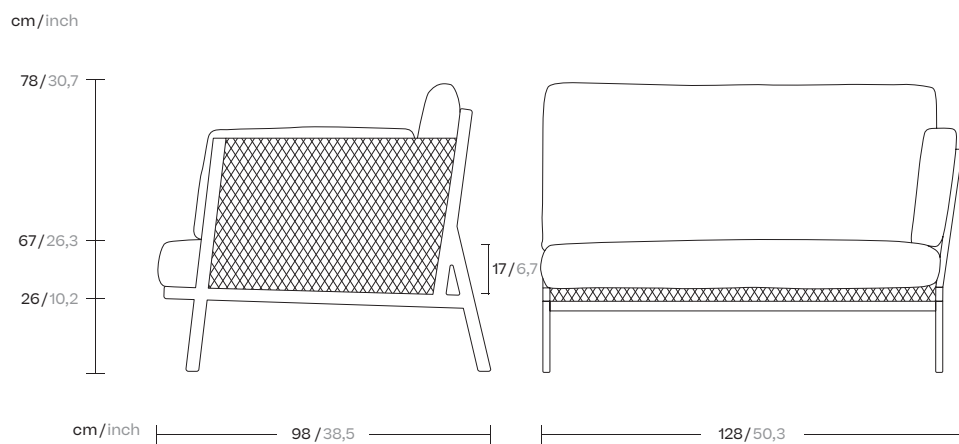
Designer
Patricia Urquiola

Collection
Vieques

Reference
KS4100600

1/4

Kettal Vieques is a collection characterised by the combination of an aluminium frame with a new and revolutionary three-dimensional fabric, Nido d'Ape, with exceptional technical features, created especially for this collection and exclusively for Kettal.



kettal

Right corner module

Designer
Patricia Urquiola

Collection
Vieques

Reference
KS4100600

2/4

Materials

Aluminium

Antioxy, Heavy Load, Resistant En-1421, Kettalize-It, Anti-Scratch, Easy Clean, Flame Retardant M1, Eco Friendly Ecoembes Recycling Process

Porotex Fabric Special, Laminated Fabric

Heavy Load 100.000 Cycles, Heavy Load Resistant 1000 Decitex, Kettalize-It, Resist U.v. En-581-4, Easy Clean, Abrasion, Resistance 30.000 Cycles, Quickdry

Maintenance

Clean with mild soap using sponge or cloth. Be gentle while cleaning, do not scrub aggressively the fabric. Once cleaned please make sure you remove soap excess.

In case of aggressive stains clean with diluted household bleach.

Clean stains promptly. The longer it remains, more difficult will be to remove.

Once cleaned the fabric steam iron the fabric. Just use steam, be carefull NOT placing the iron directly in the fabric it will get damage.

Frame Colour Options



Chalk
721



Bone
678



Tuff
103



Mist
773



Flint
734



London Clay
729



Mahogany
100



Carbon
737



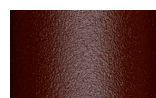
Lilac
104



Feldspar
082



Sepia
088



Terra Rossa
087



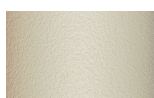
Magma
086



Terracota
085



Sahara
139



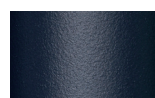
Camomile
106



Aquamarine
107



Cobalt
089



Indigo
094



Jade
091



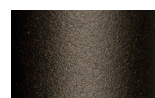
Onyx
101



Juniper
092



Amazon
102



Bronze
093



Corten
727



Claystone
741



Sand Storm
132



Pumice
131



Galena
105



Manganese
726

Right corner module

Designer
Patricia Urquiola

Collection
Vieques

Reference
KS4100600

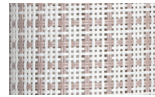
3/4

Fabric Options

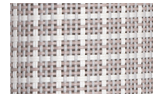
Porotex Parallel Fabrics



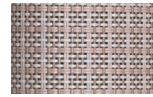
White Anemone
527



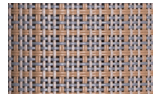
Lace Coral
528



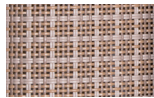
Padina
564



Saline
571



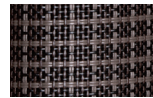
Alaria
572



Sponge
536



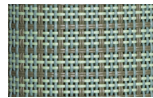
Fucus
537



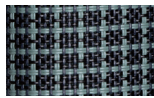
Urchin
547



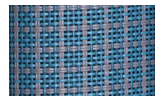
Kelp
556



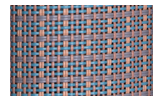
Turtle Grass
553



Deep Ocean
570



Winter Sea
569



Xenia
568



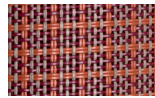
Plumaria
567



Irish Moss
559



Coral
562



Dulse
565

Right corner module

Designer
Patricia Urquiola

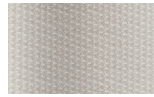
Collection
Vieques

Reference
KS4100600

4/4

Seat / Back / Arm Cushion
Fabric Options

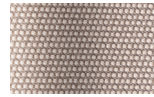
Terrain Fabrics Laminate



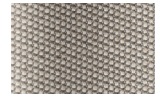
White Cliffs
290



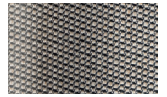
Dry Sand
285



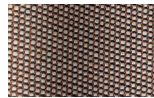
Porous Grey
291



Limestone
292



Fog
289



Deer
286



Wet Sand
287



Cobblestone
302



Cyprus Umber
301



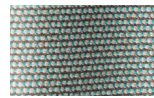
Loam
297



Charcoal
293



Arctic
295



Fjord
248



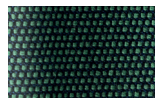
Cerulean
314



Caribbean
298



Atlantic
311



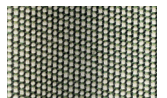
Rainforest
312



Lagoon
249



Cedar
288



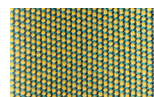
Moss
296



Olive
313



Autumn
315



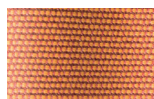
Summer Sky
317



Golden Sand
303



Flamma
304



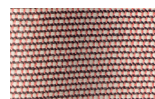
Sunrise
299



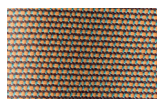
Saffron
305



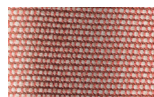
Burnt Sienna
306



Ash Rose
294



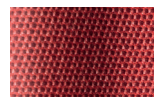
Cooper
316



Dusk Pink
307



Flamingo
310



Coral
309



Sandstone
308

Vieques
Central module
by Patricia Urquiola

kettal

Central module

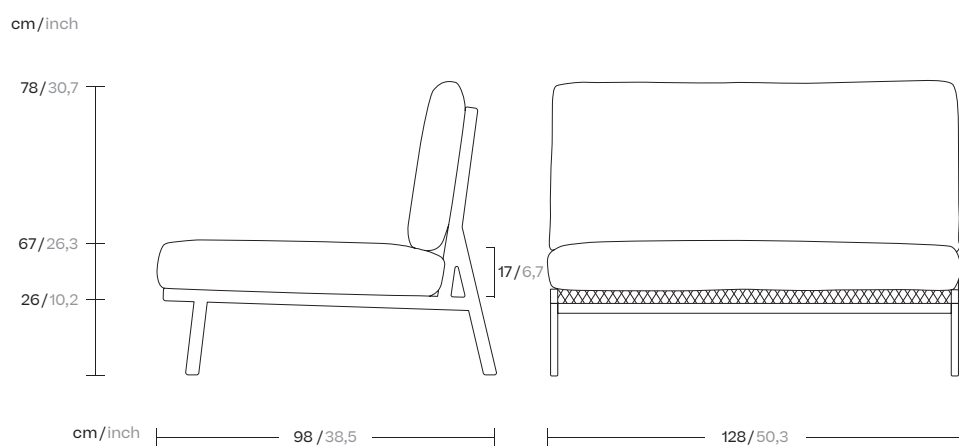
Designer
Patricia Urquiola

Collection
Vieques

Reference
KS4100700

1/4

Kettal Vieques is a collection characterised by the combination of an aluminium frame with a new and revolutionary three-dimensional fabric, Nido d'Ape, with exceptional technical features, created especially for this collection and exclusively for Kettal.



kettal

Central module

Designer
Patricia Urquiola

Collection
Vieques

Reference
KS4100700

2/4

Materials

Aluminium

Antioxy, Heavy Load, Resistant En-1421, Kettalize-It, Anti-Scratch, Easy Clean, Flame Retardant M1, Eco Friendly Ecoembes Recycling Process

Porotex Fabric Special, Laminated Fabric

Heavy Load 100.000 Cycles, Heavy Load Resistant 1000 Decitex, Kettalize-It, Resist U.v. En-581-4, Easy Clean, Abrasion, Resistance 30.000 Cycles, Quickdry

Maintenance

Clean with mild soap using sponge or cloth. Be gentle while cleaning, do not scrub aggressively the fabric. Once cleaned please make sure you remove soap excess.

In case of aggressive stains clean with diluted household bleach.

Clean stains promptly. The longer it remains, more difficult will be to remove.

Once cleaned the fabric steam iron the fabric. Just use steam, be carefull NOT placing the iron directly in the fabric it will get damage.

Frame Colour Options



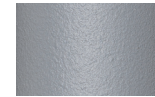
Chalk
721



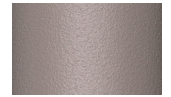
Bone
678



Tuff
103



Mist
773



Flint
734



London Clay
729



Mahogany
100



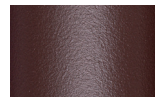
Carbon
737



Lilac
104



Feldspar
082



Sepia
088



Terra Rossa
087



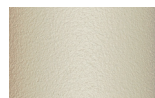
Magma
086



Terracota
085



Sahara
139



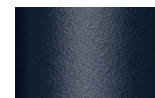
Camomile
106



Aquamarine
107



Cobalt
089



Indigo
094



Jade
091



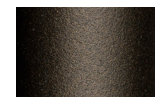
Onyx
101



Juniper
092



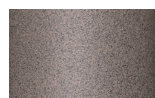
Amazon
102



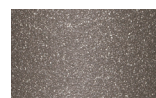
Bronze
093



Corten
727



Claystone
741



Sand Storm
132



Pumice
131



Galena
105



Manganese
726

Central module

Designer
Patricia Urquiola

Collection
Vieques

Reference
KS4100700

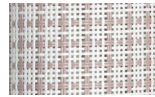
3/4

Fabric Options

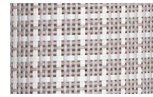
Porotex Parallel Fabrics



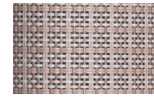
White Anemone
527



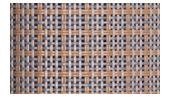
Lace Coral
528



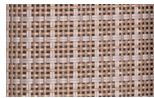
Padina
564



Saline
571



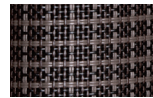
Alaria
572



Sponge
536



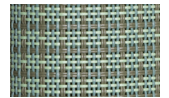
Fucus
537



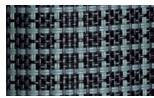
Urchin
547



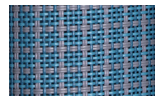
Kelp
556



Turtle Grass
553



Deep Ocean
570



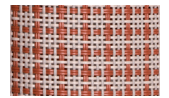
Winter Sea
569



Xenia
568



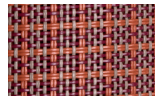
Plumaria
567



Irish Moss
559



Coral
562



Dulse
565

Central module

Designer
Patricia Urquiola

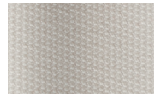
Collection
Vieques

Reference
KS4100700

4/4

Seat / Back / Arm Cushion
Fabric Options

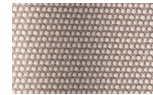
Terrain Fabrics Laminate



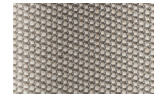
White Cliffs
290



Dry Sand
285



Porous Grey
291



Limestone
292



Fog
289



Deer
286



Wet Sand
287



Cobblestone
302



Cyprus Umber
301



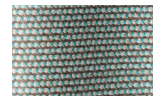
Loam
297



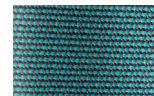
Charcoal
293



Arctic
295



Fjord
248



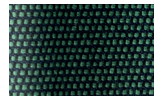
Cerulean
314



Caribbean
298



Atlantic
311



Rainforest
312



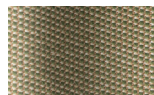
Lagoon
249



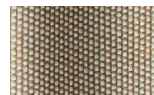
Cedar
288



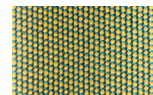
Moss
296



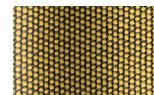
Olive
313



Autumn
315



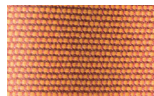
Summer Sky
317



Golden Sand
303



Flamma
304



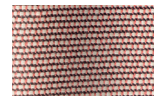
Sunrise
299



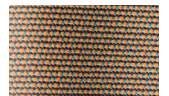
Saffron
305



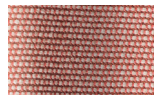
Burnt Sienna
306



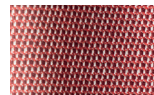
Ash Rose
294



Cooper
316



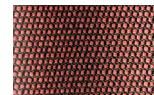
Dusk Pink
307



Flamingo
310



Coral
309



Sandstone
308

Vieques

Corner module

by Patricia Urquiola

kettal

Corner module

Designer
Patricia Urquiola

Collection
Vieques

Reference
KS4100800

1/4

Kettal Vieques is a collection characterised by the combination of an aluminium frame with a new and revolutionary three-dimensional fabric, Nido d'Ape, with exceptional technical features, created especially for this collection and exclusively for Kettal.

cm/inch

78/30,7

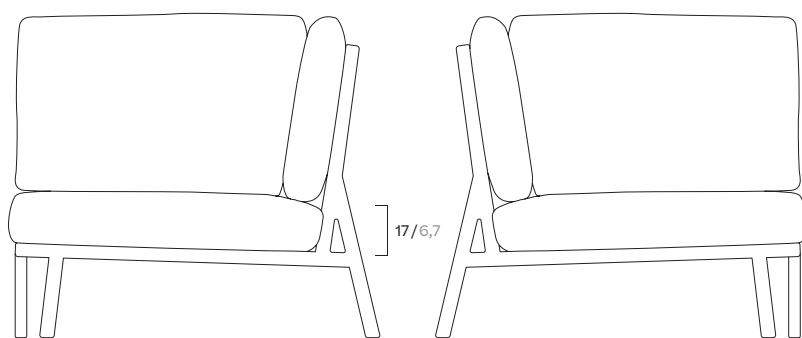
26/10,2

cm/inch

98/38,5

98/38,5

17/6,7



kettal

Corner module

Designer
Patricia Urquiola

Collection
Vieques

Reference
KS4100800

2/4

Materials

Aluminium

Antioxy, Heavy Load, Resistant En-1421, Kettalize-It, Anti-Scratch, Easy Clean, Flame Retardant M1, Eco Friendly Ecoembes Recycling Process

Porotex Fabric Special, Laminated Fabric

Heavy Load 100.000 Cycles, Heavy Load Resistant 1000 Decitex, Kettalize-It, Resist U.v. En-581-4, Easy Clean, Abrasion, Resistance 30.000 Cycles, Quickdry

Maintenance

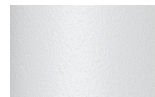
Clean with mild soap using sponge or cloth. Be gentle while cleaning, do not scrub aggressively the fabric. Once cleaned please make sure you remove soap excess.

In case of aggressive stains clean with diluted household bleach.

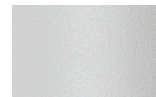
Clean stains promptly. The longer it remains, more difficult will be to remove.

Once cleaned the fabric steam iron the fabric. Just use steam, be carefull NOT placing the iron directly in the fabric it will get damage.

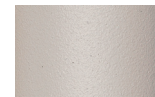
Frame Colour Options



Chalk
721



Bone
678



Tuff
103



Mist
773



Flint
734



London Clay
729



Mahogany
100



Carbon
737



Lilac
104



Feldspar
082



Sepia
088



Terra Rossa
087



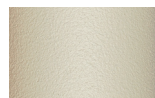
Magma
086



Terracota
085



Sahara
139



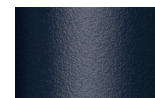
Camomile
106



Aquamarine
107



Cobalt
089



Indigo
094



Jade
091



Onyx
101



Juniper
092



Amazon
102



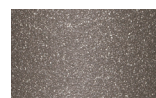
Bronze
093



Corten
727



Claystone
741



Sand Storm
132



Pumice
131



Galena
105



Manganese
726

Corner module

Designer
Patricia Urquiola

Collection
Vieques

Reference
KS4100800

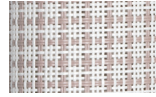
3/4

Fabric Options

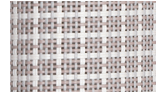
Porotex Parallel Fabrics



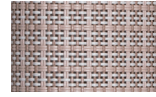
White Anemone
527



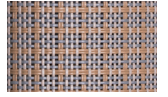
Lace Coral
528



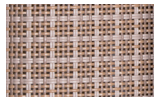
Padina
564



Saline
571



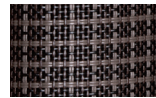
Alaria
572



Sponge
536



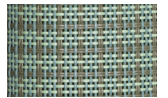
Fucus
537



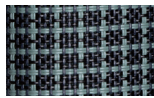
Urchin
547



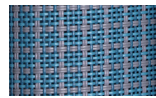
Kelp
556



Turtle Grass
553



Deep Ocean
570



Winter Sea
569



Xenia
568



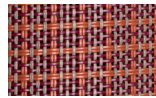
Plumaria
567



Irish Moss
559



Coral
562



Dulse
565

Corner module

Designer
Patricia Urquiola

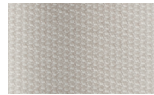
Collection
Vieques

Reference
KS4100800

4/4

Seat / Back / Arm Cushion
Fabric Options

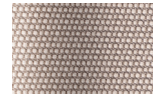
Terrain Fabrics Laminate



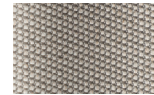
White Cliffs
290



Dry Sand
285



Porous Grey
291



Limestone
292



Fog
289



Deer
286



Wet Sand
287



Cobblestone
302



Cyprus Umber
301



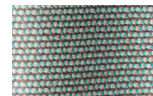
Loam
297



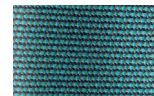
Charcoal
293



Arctic
295



Fjord
248



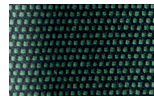
Cerulean
314



Caribbean
298



Atlantic
311



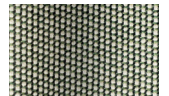
Rainforest
312



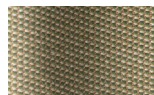
Lagoon
249



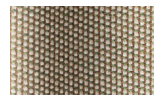
Cedar
288



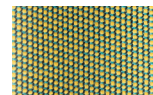
Moss
296



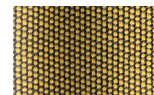
Olive
313



Autumn
315



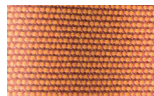
Summer Sky
317



Golden Sand
303



Flamma
304



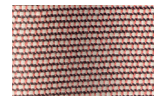
Sunrise
299



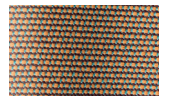
Saffron
305



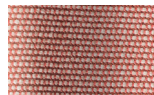
Burnt Sienna
306



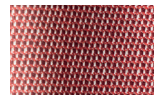
Ash Rose
294



Cooper
316



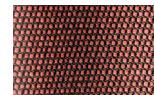
Dusk Pink
307



Flamingo
310



Coral
309



Sandstone
308