

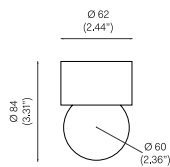


BRASS ARCHITECTURAL COLLECTION SCONCE 60, CEILING & WALL MOUNTED, 2017

Polished Brass and Polished Nickel-plated Brass.
Mouth Blown opaline glass.

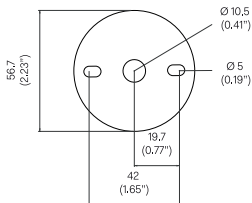


OVERALL DIMENSIONS

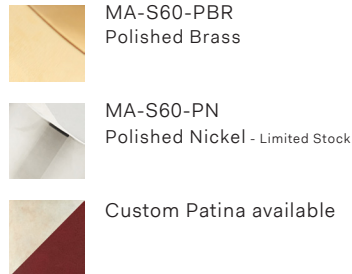


BACKPLATE DIMENSIONS

Mounting screws not included
5mm countersunk screw recommended



MATERIALS AND FINISHES



CLEANING INSTRUCTIONS

Before cleaning, lighting fixtures must be turned off and unplugged from mains electricity. Whilst cleaning please take care and use the gloves provided.

Polished brass: As the item is unlacquered it will naturally oxidise and darken. Upon touching the items without gloves, fingerprints are likely to occur and leave marks. Use a good quality brass cleaning liquid and follow the product instructions using the extra soft dust cloth. Do not apply pressure on persistent marks. Remove them using repeated gentle motions and by reapplying the brass cleaning liquid.

Polished nickel: Use a lightly damp soft dust cloth and gently go over marks until clean. Dry it afterwards with a soft dust cloth.

Opaline Glass: Remove the opaline glass from the product. Using a lightly damp cloth, clean only the outside of the sphere. Only put the glass sphere back on the product once it is fully dry.

BULB SPECIFICATIONS

G9 2W LED bulb
250lm / 2700k

PRODUCT SPECIFICATIONS

Input voltage: 120V / 240V
Maximum wattage: 25W
120V / 240V dimmable LED triac
Product weight: 1kg

120V version supplied with paintable junction box cover.