

SENA chair

By Christophe Pillet

MATERIALES

- Tablero curvado de respaldo en madera de haya contrachapada y recubierto de poliuretano ignífugo (según normativa inglesa).
- Asiento de tablero contrachapado de haya recubierto de poliuretano ignífugo (según normativa inglesa).
- Patas de madera maciza de roble o nogal.
- Patas metálicas de aluminio lacado, con sistema de rotación de 360°.
- Tacos de plástico o de fieltro.

MATERIALS

- Curved backrest in beech plywood covered with fire retardant polyurethane (according to English standards).
- Seat in beech plywood covered with fire retardant polyurethane (according to English standards).
- Solid oak or walnut legs.
- Lacquered aluminium metal legs, with 360° rotation system.
- Plastic or felt feet.

MATÉRIAUX

- Dossier courbé en contreplaqué de hêtre recouvert de polyuréthane ignifugé (selon la réglementation anglaise).
- Siège en contreplaqué de hêtre recouvert de polyuréthane ignifugé (selon la réglementation anglaise).
- Pieds en chêne ou en noyer massif.
- Pieds métalliques en aluminium laqué, avec système de rotation à 360°.
- Patins en plastique ou en feutre.

MATERIALIEN

- Gebogene Rückenlehnenplatte aus Buchensperrholz mit feuerfestem Polyurethan beschichtet (gemäß den englischen Vorschriften).
- Sitz aus Buchensperrholz, beschichtet mit feuerfestem Polyurethan (gemäß den englischen Vorschriften).
- Beine aus massiver Eiche oder Nussbaum.
- Metallbeine aus lackiertem Aluminium, mit 360°-Drehsystem.
- Füße aus Kunststoff oder Filz.

MATERIALI

- Schienale curvo in multistrato di faggio rivestito di poliuretano ignifugo (secondo la normativa inglese).
- Sedile in multistrato di faggio rivestito in poliuretano ignifugo (secondo la normativa inglese).
- Gambe in rovere o noce massiccio.
- Gambe in metallo laccato, con sistema di rotazione a 360°.
- Piedini in plastica o in feltro.

ESPAÑOL



ENGLISH

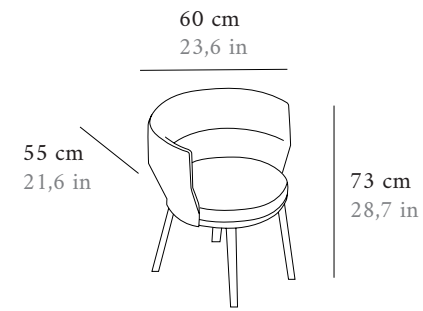
FRANÇAIS

DEUTSCH

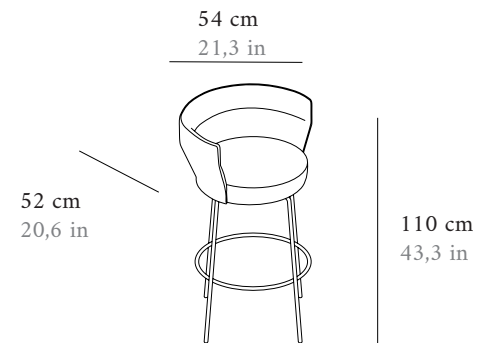
ITALIANO



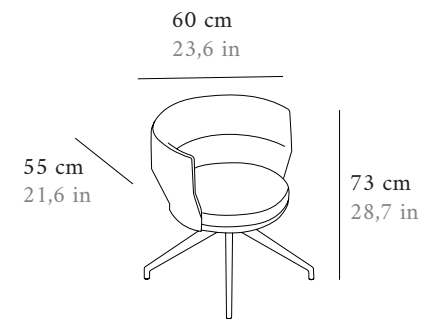
SENA
chair



SEN 101

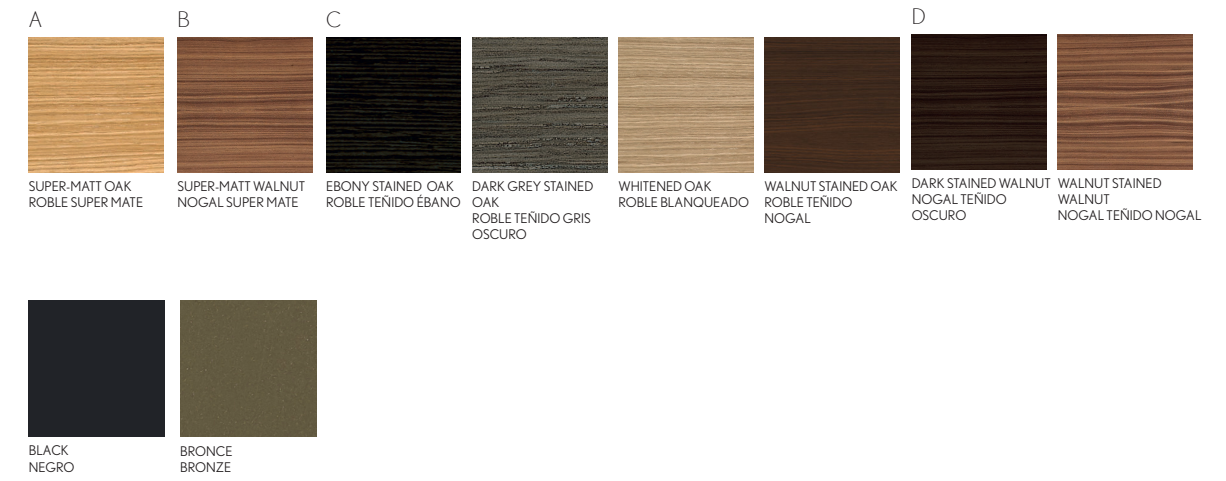


SEN 201



SEN 103

LEGS. PATAS



SEAT AND BACK. ASIENTO Y RESPALDO

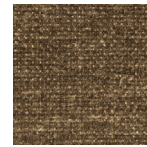
L'INTERNO - ACUATONIC



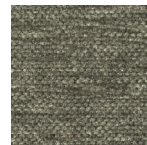
Aquatonic 101



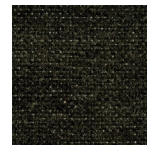
Aquatonic 201



Aquatonic 302



Aquatonic 902



Aquatonic 999

CHARACTERISTICS

Comp. 48% AC 41%PL 11%CO

CARACTERÍSTICAS

Comp. 48% AC 41%PL 11%CO

TEXTILES G2

L'INTERNO - RUBENS



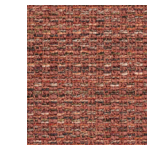
Rubens 1



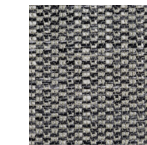
Rubens 2



Rubens 12



Rubens 7



Rubens 5

CHARACTERISTICS

Comp. 65%AC 35%PL

CARACTERÍSTICAS

Comp. 65%AC 35%PL

TEXTILES G2

L'INTERNO - APOLLO



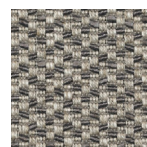
Apollo 1



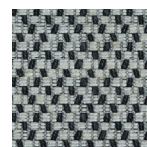
Apollo 2



Apollo 11



Apollo 9



Apollo 99

CHARACTERISTICS

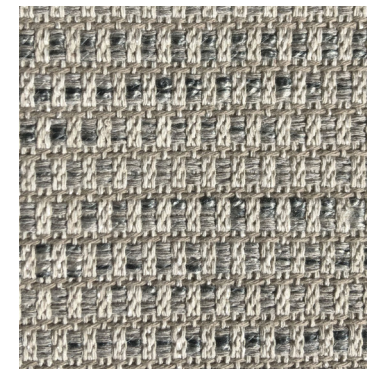
Comp. 42%CO 25%VI 20%PL 13%LI

CARACTERÍSTICAS

Comp. 42%CO 25%VI 20%PL 13%LI

TEXTILES G2

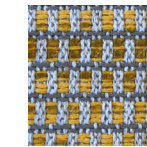
MANUEL REVERT - ODDI



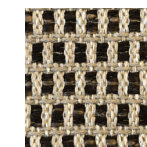
Oddi 9



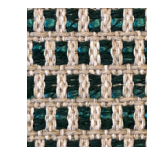
Oddi 10



Oddi 10



Oddi 5



Oddi 38

CHARACTERISTICS

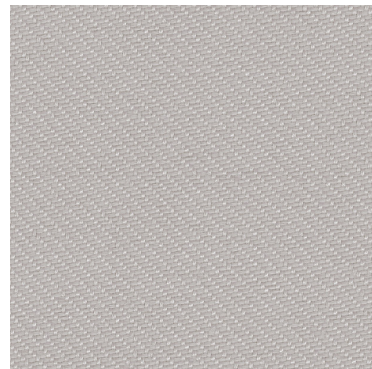
Comp. 45% PES 43% CO 11% PAC 1% PA

CARACTERÍSTICAS

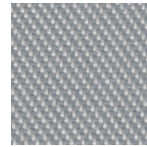
Comp. 45% PES 43% CO 11% PAC 1% PA

TEXTILES G2

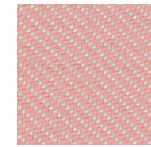
L'INTERNO - RELATE



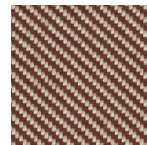
Related01



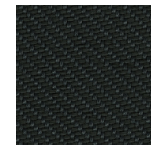
Related02



Related01



Related04



Related09

CHARACTERISTICS

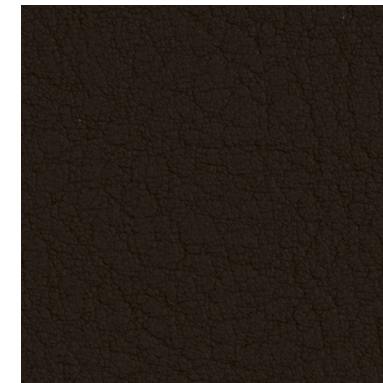
Comp. 100% Trevira CS

CARACTERÍSTICAS

Comp. 100% Trevira CS

TEXTILES G2

SPRADLING VALENCIA



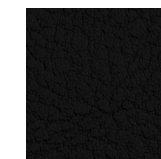
VALENCIA PRALINE001



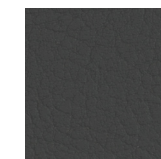
VALENCIA WEISS08032



VALENCIA EINEN01049



VALENCIA SCHWARZ09035



VALENCIA GRAPHITE04003

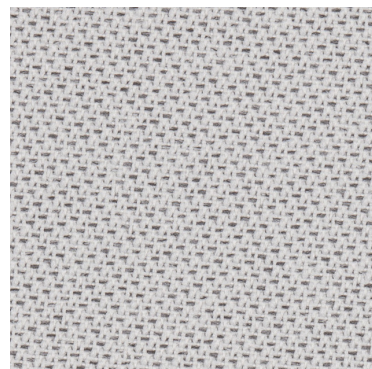
CHARACTERISTICS

Comp. Topcoat: 100% vinyl

CARACTERÍSTICAS

Comp. Capa superior: 100% vinilo

GABRIEL - TONAL



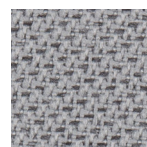
Tonal00122



Tonal01180



Tonal07089



Tonal00123



Tonal00999

CHARACTERISTICS

Comp. 99% post-consumer recycled polyester, 1% polyester

CARACTERÍSTICAS

Comp. 99% post-consumer recycled polyester, 1% polyester

TEXTILES G2

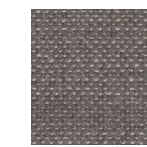
CREVIN MATIS



Matis005



Matis007



Matis052



Matis053



Matis095

CHARACTERISTICS

Comp. 50%PES 20%CV 15%CO 10%LLI

CARACTERÍSTICAS

Comp. 50%PES 20%CV 15%CO 10%LLI

TEXTILES G2

TEXTILES G2

TEXTA AFOAMS SEVEN



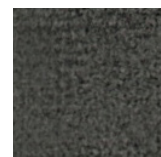
SEVEN31



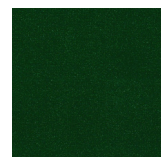
SEVEN38



SEVEN39



SEVEN368



SEVEN362

CHARACTERISTICS

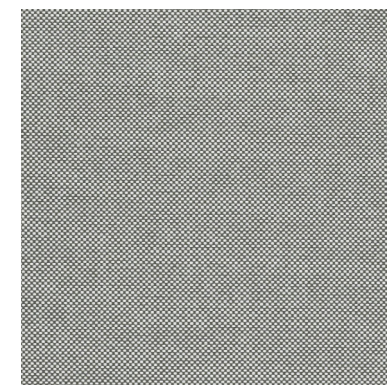
Comp. 100% PES

TEXTILES G2

CARACTERÍSTICAS

Comp. 100% PES

KVADRAT FIELD



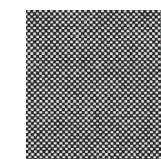
FIELD32



FIELD222



FIELD233



FIELD342



FIELD393

CHARACTERISTICS

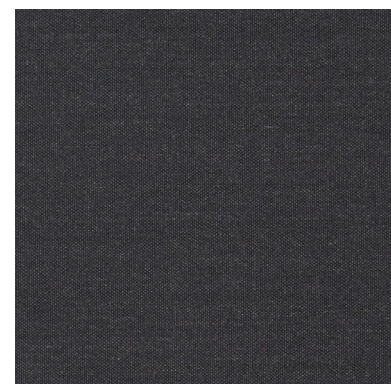
Comp. 100% Trevira CS

TEXTILES G3

CARACTERÍSTICAS

Comp. 100% Trevira CS

KVADRAT REMIX



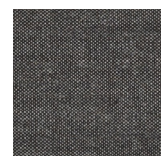
REMIK383



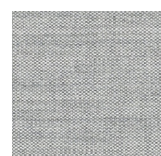
REMIK223



REMIK233



REMIK352



REMIK323

CHARACTERISTICS

Comp. 90% new wool worsted, 10% nylon

TEXTILES G3

CARACTERÍSTICAS

Comp. 90% lana virgen, 10% nailon

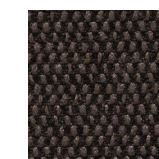
MAHARAM MESSENGER



Messenger38



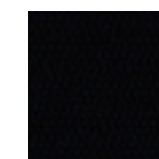
Messenger31



Messenger36



Messenger38



Messenger29

CHARACTERISTICS

Comp. 78% Recycled polyester, 15% polyester, 7% nylon

TEXTILES G3

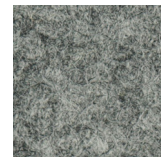
CARACTERÍSTICAS

Comp. 78% Recycled polyester, 15% polyester, 7% nylon

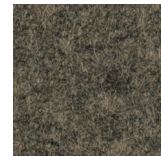
GABRIEL FOCUS MELAGNE



Focus 0309



Focus 0311



Focus 1242

CHARACTERISTICS

Comp. 100% New Zealand wool

TEXTILES G 4

CARACTERÍSTICAS

Comp. 100% New Zealand wool

KVADRAT MOSS



Moss 04



Moss 03



Moss 08

CHARACTERISTICS

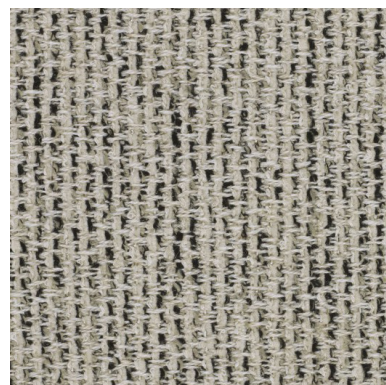
Comp. 52% cotton 22% viscose 14% polyacrylic 6% linen 3% nylon 3% polyester

TEXTILES G 5

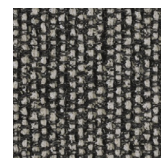
CARACTERÍSTICAS

Comp. 52% cotton 22% viscose 14% polyacrylic 6% linen 3% nylon 3% polyester

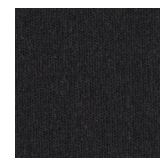
KVADRAT SAVANNA



SAVANNA 012



SAVANNA 052



SAVANNA 092



SAVANNA 202



SAVANNA 262

CHARACTERISTICS

Comp. 34% polyester, 31% new wool, 26% polyacrylic, 4% cotton, 3% nylon, 2% linen

TEXTILES G 4

CARACTERÍSTICAS

Comp. 34% poliéster, 31% lana virgen, 26% poliacrílico, 4% algodón, 3% nailon, 2% lino

LEATHER BABEL



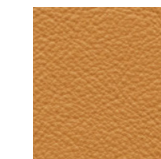
CINDER



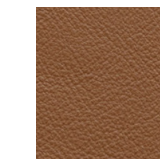
AVORIO



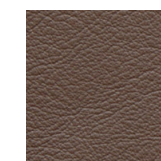
STONE



MIEL



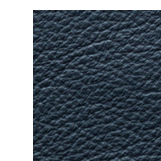
MARRONE



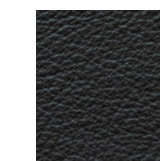
CASTAGNA



NEW GREY



NOTE



NERO

CHARACTERISTICS

Comp. Leather bovine European 0.8 - 1mm

TEXTILES G 5

CARACTERÍSTICAS

Comp. Leather bovine European 0.8 - 1mm

