

Cesta Metálica

Miguel Milá. 1962

Table Lamps


SANTA & COLE



This is an enhanced rendering of the metal version of the Cesta and has its own specific features. It comes with or without a leather handle, the smooth feel of which stands in stark contrast to the stern rigidity of the bars that gently house the opal-shaped globe that lacks an opening on top. A blend of the firm and the fragile.

General description:

Stainless steel structure.

White opal glass lampshade.

Available with or without natural colour leather handle.

Electric cable length: 2,25 m / 88.6"

Light source:

Recommended light source (dimnable):

LED bulb: 10 W

Other light sources: Max. 60 W

E27 - E26

(Max. hgt. 130 mm / 5.1")

Light source not included.

Dimmer included.

Compatible with bulbs of the Energy efficiency class (E.E.C): A++ ... E.

Suitable only for indoor use.

Always use the light source recommended or equivalent.

Input voltage : 100, 120, 230 Vac.

(50 Hz / 60 Hz). According to destination.

Approximate weight (unpacked):

Without leather: 5,1 kg / 11.24 lb

With leather: 5,2 kg / 11.46 lb

Regulations:

CE

UNE-EN 60598

UNE-EN 55015

UNE-EN 60529

UL

Dry location only

UL-153

E-352592

Cesta Metálica

Miguel Milá. 1962

Table Lamps


SANTA & COLE

Maintenance:

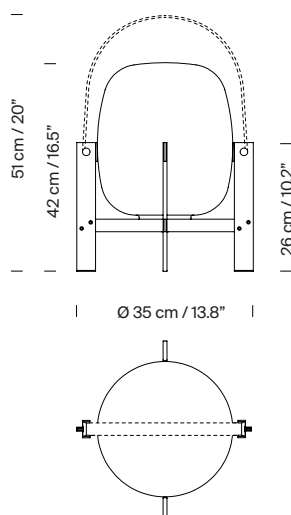
Clean with a smooth cloth. Do not use ammonia, solvents or abrasive cleaning products.

Others:

The lamp is delivered in one package.

The assembly instructions are delivered with the product.

Model: sizes in cm



Collection:

Table lamps



Cesta



Cestita



Cesta Batería



Cesta Metálica



Cestita Metálica



Wally

Wall lamps

Pendant lamps



Globo Cesta



Globo Cestita