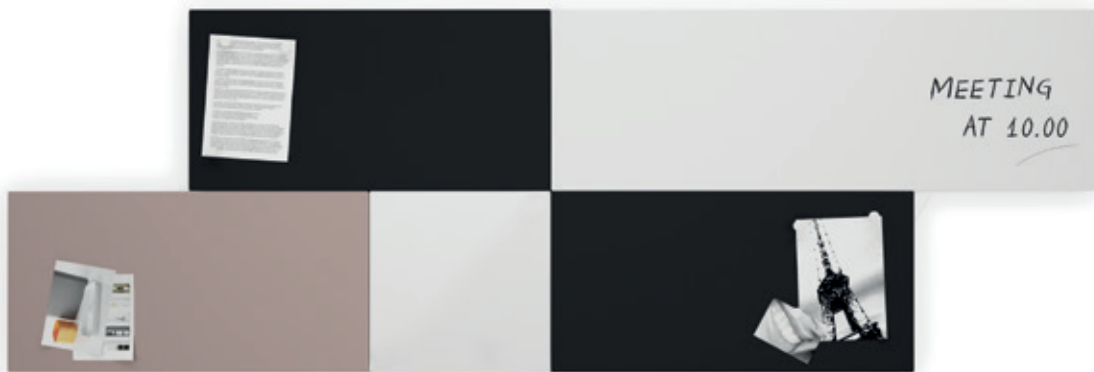


systemtronic

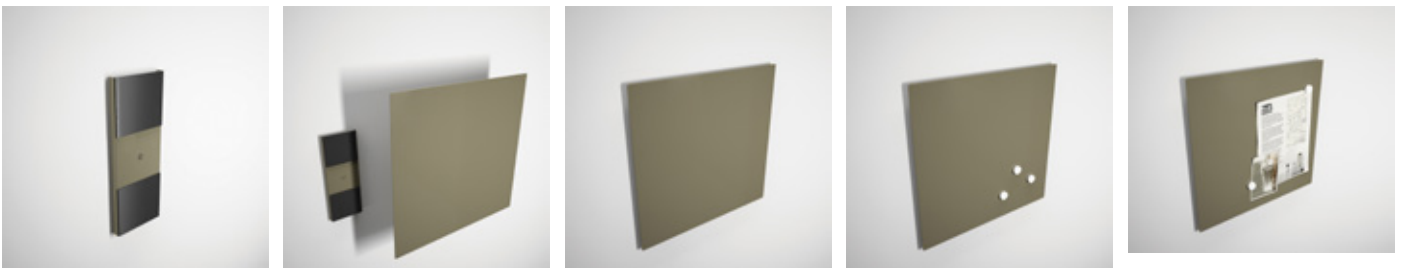
datasheet MODULOR



General description:

Metallic notice panels of different sizes and colours that allow adapting magnetic elements and create original wall compositions in many spaces: informative points, offices, receptions, children's rooms, etc.

Designer: Pablo Gironés.

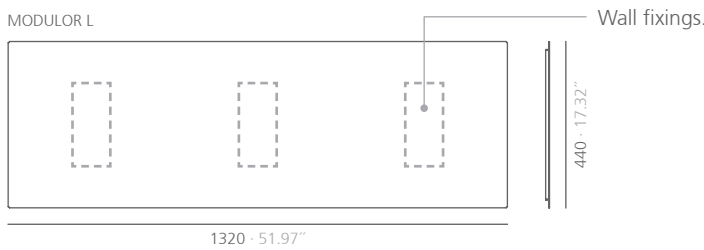
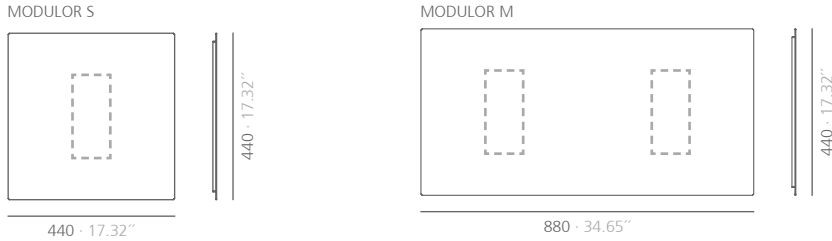


Technical description:

Material: Steel.

Dimensions:

- MODULOR_S: 440x440 mm 17.32x17.32"
- MODULOR_M: 880x440 mm 34.65x17.32"
- MODULOR_L: 1320x440 mm 51.97x17.32"



SI units: mm and inches

Finishes:

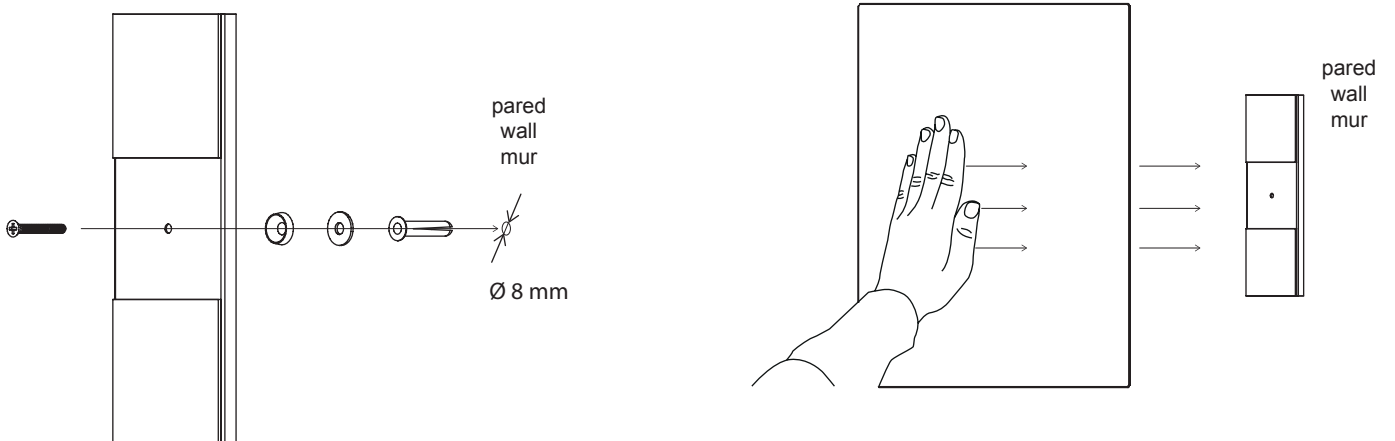
white gloss	white gloss to write-on	satin black RAL 9011	grey beige gloss RAL 1019	mustard gloss RAL 1012

*Polyester paint

Consult for special dimensions or any other modification.

Assembly:

Magnetic fixing system.



Maintenance:

-Polyester Paint:

For dry dirt (dust), use a damp cloth. For greasy/oily stains (fingerprints), wipe with a sponge with water and dishwashing liquid. Rinse with a damp cloth. Avoid using products containing solvents and/or pure ethyl alcohol.

-Aluminium-metal-glass-melamine-plastic:

We recommend using normal cleaning products for delicate surfaces. Alcohol, solvents and abrasive agents must be avoided.