

systemtronic

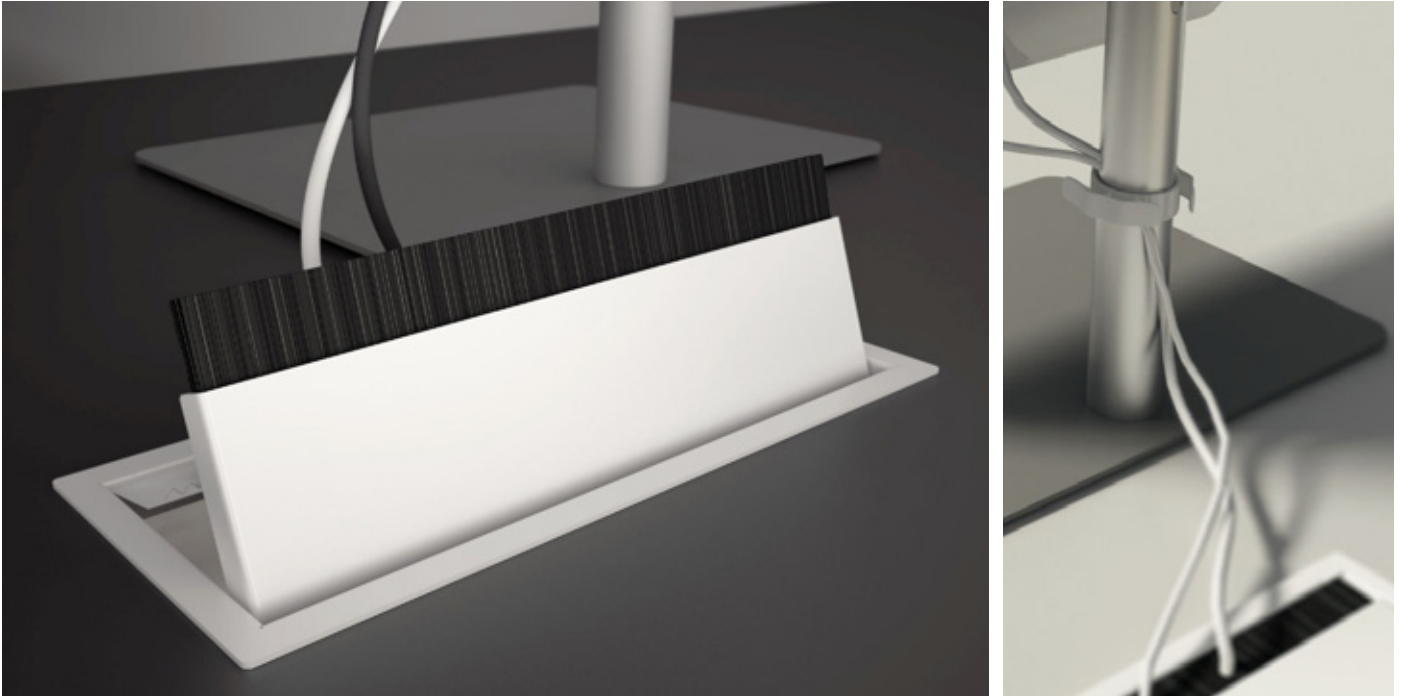
datasheet SWIRE



Technical description:

The SWIRE Cable grommets is part of the "office set" Systemtronic, several accessories that ensure the organization of the elements in office workspaces. SWIRE allows to pass cables through the tabletop as a window. Manufactured in metal plate and available in white, black and aluminum.

Designer: STC Studio.



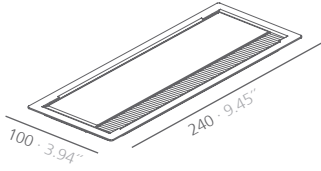
Technical description:

Its installation requires to open a rectangular hole in the table top.
The frame incorporates saw teeth allowing a better fixation of the cable grommets.

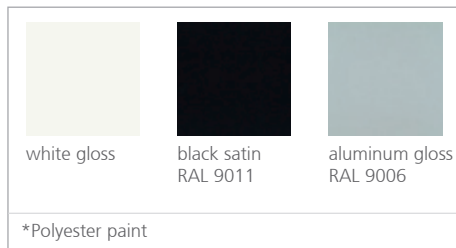
Material: Steel

Dimensions: 100x240mm 3.94x9.45"

SWIRE



SI units: mm and inches

Finishes:

Consult for special dimensions or any other modification.

Maintenance:

-Polyester Paint:

For dry dirt (dust), use a damp cloth. For greasy/oily stains (fingerprints), wipe with a sponge with water and dishwashing liquid. Rinse with a damp cloth. Avoid using products containing solvents and/or pure ethyl alcohol.

-Aluminium-metal-glass-melamine-plastic:

We recommend using normal cleaning products for delicate surfaces. Alcohol, solvents and abrasive agents must be avoided.

Assembly:

