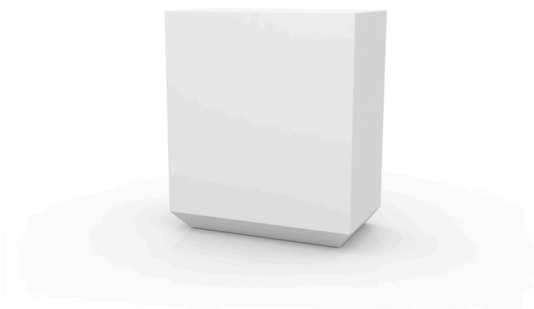


VELA SINGLE BAR

By Ramon Esteve



This extensive outdoor furniture and plantpot collection aims to offer the comfort and the quality of interior furniture without losing its original qualities. VELA is a modulate system with an elementary prismatic geometry that bases its singularity in the balance of its proportions. The elements can combine among themselves to integrate into any space. Their precise volumes create the illusion of hovering some centimetres off the floor, and when they are illuminated they are transformed into floating architectures.

View online: <https://www.vondom.com/products/54081>

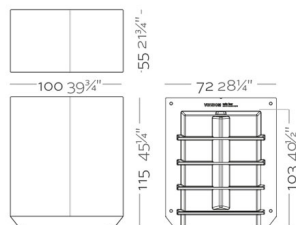
Features

Description

Made of polyethylene resin by rotational moulding. 100% Recyclable. Item suitable for indoor and outdoor use. Available in different finishes.

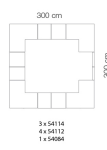
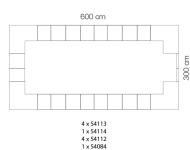
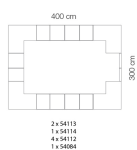
Weight

35 Kg



VELA Barra 100
VELA Single Bar

Combinations



Finishes

BASIC

Ref. 54081

Matt Polyethylene

LACQUERED

Ref. 54081F

Lacquered Polyethylene

RGBW LED

Ref. 54081L

Unit with internal lighting with RGBW LED technology and remote control unit for switching colors. Available only in matte ice white finish. Remote control included.

RGBW LED DMX

Ref. 54081D

Unit with internal lighting with RGBW LED technology and remote control unit for switching colors. Also controlled by DMX-1024 (wireless), enabling communication between one or more products

VELA DOUBLE BAR

By Ramon Esteve



This extensive outdoor furniture and plantpot collection aims to offer the comfort and the quality of interior furniture without losing its original qualities. VELA is a modulate system with an elementary prismatic geometry that bases its singularity in the balance of its proportions. The elements can combine among themselves to integrate into any space. Their precise volumes create the illusion of hovering some centimetres off the floor, and when they are illuminated they are transformed into floating architectures.

View online: <https://www.vondom.com/products/54082>

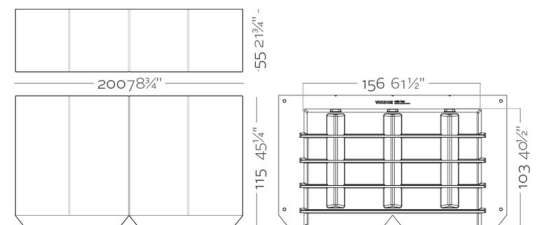
Features

Description

Made of polyethylene resin by rotational moulding. 100% Recyclable. Item suitable for indoor and outdoor use. Available in different finishes.

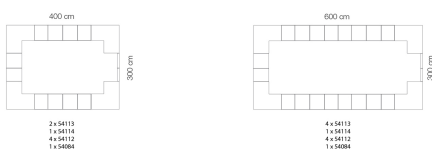
Weight

65.33 Kg



VELA Barra 200
VELA Double Bar

Combinations



Finishes

BASIC

Ref. 54082

Matt Polyethylene

LACQUERED

Ref. 54082F

Lacquered Polyethylene

RGBW LED

Ref. 54082L

Unit with internal lighting with RGBW LED technology and remote control unit for switching colors. Available only in matte ice white finish. Remote control included.

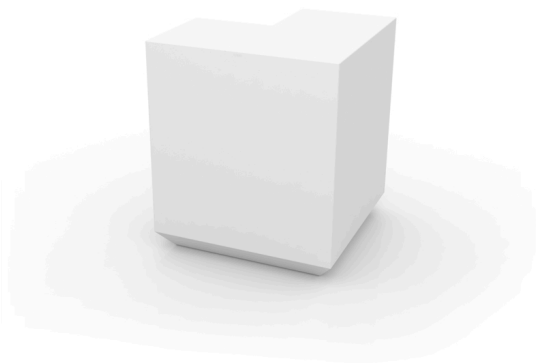
RGBW LED DMX

Ref. 54082D

Unit with internal lighting with RGBW LED technology and remote control unit for switching colors. Also controlled by DMX-1024 (wireless), enabling communication between one or more products

VELA CORNER BAR

By Ramon Esteve



This extensive outdoor furniture and plantpot collection aims to offer the comfort and the quality of interior furniture without losing its original qualities. VELA is a modulate system with an elementary prismatic geometry that bases its singularity in the balance of its proportions. The elements can combine among themselves to integrate into any space. Their precise volumes create the illusion of hovering some centimetres off the floor, and when they are illuminated they are transformed into floating architectures.

View online: <https://www.vondom.com/products/54083>

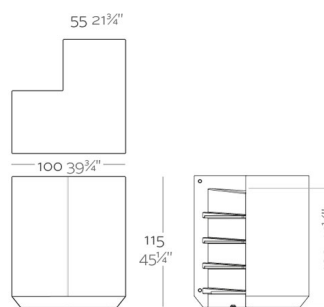
Features

Description

Made of polyethylene resin by rotational moulding. 100% Recyclable. Item suitable for indoor and outdoor use. Available in different finishes.

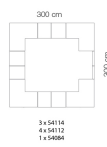
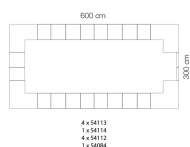
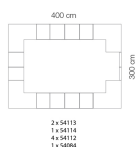
Weight

44 Kg



VELA Barra Esquina
VELA Corner Bar

Combinations



Finishes

BASIC

Ref. 54083

Matt Polyethylene

LACQUERED

Ref. 54083F

Lacquered Polyethylene

RGBW LED

Ref. 54083L

Unit with internal lighting with RGBW LED technology and remote control unit for switching colors. Available only in matte ice white finish. Remote control included.

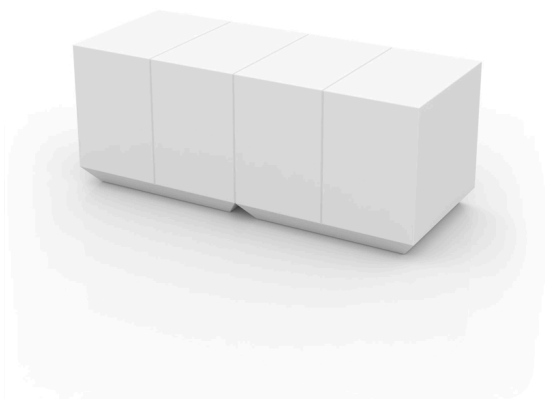
RGBW LED DMX

Ref. 54083D

Unit with internal lighting with RGBW LED technology and remote

VELA CATERING BAR

By Ramon Esteve



This extensive outdoor furniture and plantpot collection aims to offer the comfort and the quality of interior furniture without losing its original qualities. VELA is a modulate system with an elementary prismatic geometry that bases its singularity in the balance of its proportions. The elements can combine among themselves to integrate into any space. Their precise volumes create the illusion of hovering some centimetres off the floor, and when they are illuminated they are transformed into floating architectures.

View online: <https://www.vondom.com/products/54103>

Features

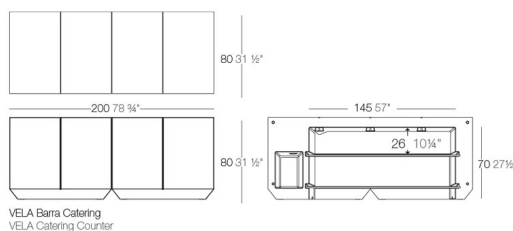
Description

Made of polyethylene resin by rotational moulding. 100% Recyclable. Item suitable for indoor and outdoor use. Available in different finishes.

Weight

60.58 Kg

Shelves Dimensions: 59" x 18 1/2" x 1/2"
Dimensiones de los estantes: 150 x 47 x 1,2 cm



Finishes

BASIC

Ref. 54103

Matt Polyethylene

LACQUERED

Ref. 54103F

Lacquered Polyethylene

LIGHT

Ref. 54103W

White internally lit unit with LED technology. Available only in matte ice white finish.

RGBW LED

Ref. 54103L

Unit with internal lighting with RGBW LED technology and remote control unit for switching colors. Available only in matte ice white finish. Remote control included.

RGBW LED DMX

Ref. 54103D

Unit with internal lighting with RGBW LED technology and remote control unit for switching colors. Also controlled by DMX-1024 (wireless), enabling communication between one or more products simultaneously via the DMX transmitter (not included).

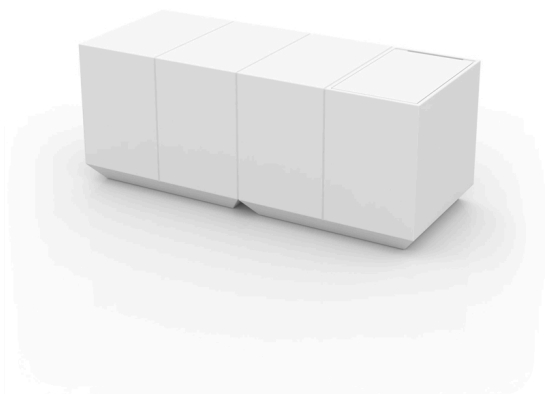
RGBW LED BATTERY

Ref. 54103Y

Unit with internal lighting with battery-powered RGBW LED technology. Includes charger and remote control for switching colors and charger. Available only in matte ice white finish.

VELA CATERING BAR ICE BUCKET

By Ramon Esteve



This extensive outdoor furniture and plantpot collection aims to offer the comfort and the quality of interior furniture without losing its original qualities. VELA is a modulate system with an elementary prismatic geometry that bases its singularity in the balance of its proportions. The elements can combine among themselves to integrate into any space. Their precise volumes create the illusion of hovering some centimetres off the floor, and when they are illuminated they are transformed into floating architectures.

View online: <https://www.vondom.com/products/54109>

Features

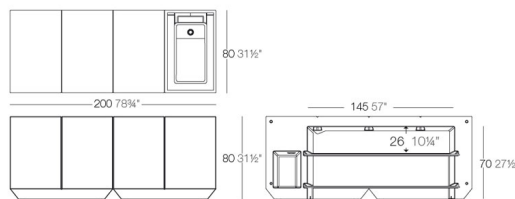
Description

Made of polyethylene resin by rotational moulding. 100% Recyclable. Item suitable for indoor and outdoor use. Available in different finishes.

Weight

60 Kg

Cubitera Integrada: 60x52x23 cm
Integrated Ice Bucket. Dimensions: 23½" x 12½" x 9"
Dimensiones de los estantes: 150 x 47 x 1,2 cm
Shelves Dimensions: 59" x 18½" x ½"



VELA Barra Catering con Cubitera
VELA Catering Counter with Ice Bucket

Finishes

BASIC

Ref. 54109

Matt Polyethylene

LACQUERED

Ref. 54109F

Lacquered Polyethylene

LIGHT

Ref. 54109W

White internally lit unit with LED technology. Available only in matte ice white finish.

RGBW LED

Ref. 54109L

Unit with internal lighting with RGBW LED technology and remote control unit for switching colors. Available only in matte ice white finish. Remote control included.

RGBW LED DMX

Ref. 54109D

Unit with internal lighting with RGBW LED technology and remote control unit for switching colors. Also controlled by DMX-1024 (wireless), enabling communication between one or more products simultaneously via the DMX transmitter (not included).

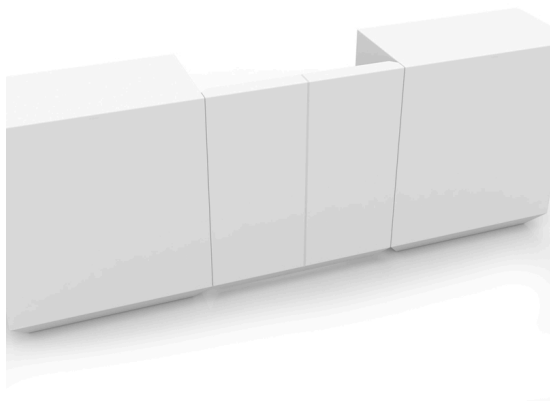
RGBW LED BATTERY

Ref. 54109Y

Unit with internal lighting with battery-powered RGBW LED technology. Includes charger and remote control for switching colors and charger. Available only in matte ice white finish.

VELA BAR DOOR

By Ramon Esteve



This extensive outdoor furniture and plantpot collection aims to offer the comfort and the quality of interior furniture without losing it's original qualities. VELA is a modulate system with an elementary prismatic geometry that bases its singularity in the balance of its proportions. The elements can combine among themselves to integrate into any space. Their precise volumes create the illusion of hovering some centimetres off the floor, and when they are illuminated they are transformed into floating architectures.

View online: <https://www.vondom.com/products/54084>

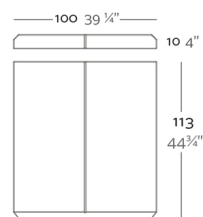
Features

Description

Made of polyethylene resin by rotational moulding. 100% Recyclable. Item suitable for indoor and outdoor use. Available in different finishes.

Weight

14.95 Kg



VELA Bar Door (with hinge)
VELA Puerta Barra (con bisagras)

Finishes

BASIC

Ref. 54084

Matt Polyethylene

LACQUERED

Ref. 54084F

Lacquered Polyethylene

COLOR	BASIC	LACQUERED / LACADO
ICE		
WHITE		
BLACK		
BRONZE		
STEEL		
ANTHRACITE		
CHAMPAGNE		
RED		
PISTACHIO		



COLOR	BASIC	LACQUERED / LACADO	LUZ
ICE	<input type="checkbox"/>	<input type="checkbox"/>	<input type="checkbox"/>
WHITE	<input type="checkbox"/>	<input type="checkbox"/>	<input type="checkbox"/>
BLACK	<input type="checkbox"/>	<input type="checkbox"/>	<input type="checkbox"/>
BRONZE	<input type="checkbox"/>	<input type="checkbox"/>	<input type="checkbox"/>
STEEL	<input type="checkbox"/>	<input type="checkbox"/>	<input type="checkbox"/>
ANTHRACITE	<input type="checkbox"/>	<input type="checkbox"/>	<input type="checkbox"/>
CHAMPAGNE	<input type="checkbox"/>	<input type="checkbox"/>	<input type="checkbox"/>
RED	<input type="checkbox"/>	<input type="checkbox"/>	<input type="checkbox"/>
PISTACHIO	<input type="checkbox"/>	<input type="checkbox"/>	<input type="checkbox"/>
ORANGE	<input type="checkbox"/>	<input type="checkbox"/>	<input type="checkbox"/>
KHAKI	<input type="checkbox"/>	<input type="checkbox"/>	<input type="checkbox"/>
NAVY	<input type="checkbox"/>	<input type="checkbox"/>	<input type="checkbox"/>
PLUM	<input type="checkbox"/>	<input type="checkbox"/>	<input type="checkbox"/>
TAUPE	<input type="checkbox"/>	<input type="checkbox"/>	<input type="checkbox"/>
ECRU	<input type="checkbox"/>	<input type="checkbox"/>	<input type="checkbox"/>
BEIGE	<input type="checkbox"/>	<input type="checkbox"/>	<input type="checkbox"/>

Optional

SHELVES

2-HPL Flat shelf set. Black or white edge.

STAINLESS STEEL

Stainless steel

PACK SOUND BLUETOOTH SYSTEM

Link your smartphone or tablet to the sound system via Bluetooth.

8-wheels set.

8-wheel set with lock