

Boma

Left corner 4 seater  
“connection-open”  
by Rodolfo Dordoni

**kettal**

# Left corner 4 seater “connection- open”

Designer  
Rodolfo Dordoni

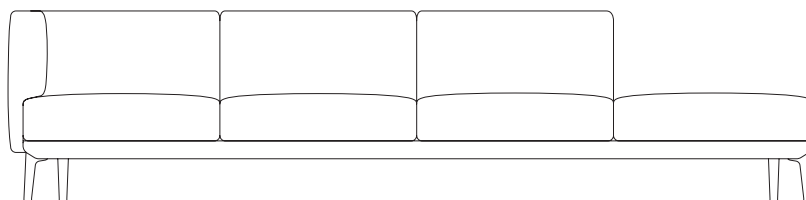
Collection  
Boma

Reference  
KS2502900

1/3

The Boma collection, designed by Rodolfo Dordoni for Kettal, was born from the need of high performances of outdoor environment, without sacrificing the increasing demand for comfort that new products have to face. Therefore the structure is organized around a frame entirely made of aluminum, capable of hiding in the essentiality of its lines either the quality of the used materials and the chance of easy articulation in different compositions.

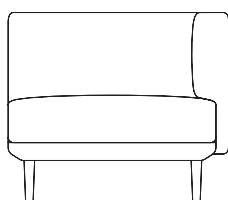
cm/inch



332/130,7

79/31,1

43/16,9



cm/inch

92/36,2



kettal

# Left corner 4 seater “connection- open”

Designer  
Rodolfo Dordoni

Collection  
Boma

Reference  
KS2502900

2/3

## Materials

Fabric  
Heavy Load 100.000 Cycles,  
Heavy Load Resistant 1000  
Decitex, Kettalize-It, Resist U.v.  
En-581-4, Easy Clean, Abrasion,  
Resistance 30.000 Cycles,  
Quickdry

Aluminium  
Antioxy, Heavy Load, Resistant  
En-1421, Kettalize-It, Anti-  
Scratch, Easy Clean, Flame  
Retardant M1, Eco Friendly  
Ecoembes Recycling Process

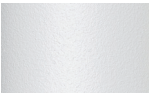
## Maintenance

Clean with mild soap using  
sponge or cloth. Be gentle  
while cleaning, do not scrub  
aggressively the fabric. Once  
cleaned please make sure you  
remove soap excess.  
In case of aggressive stains  
clean with diluted household  
bleach.  
Clean stains promptly. The  
longer it remains, more difficult  
will be to remove.

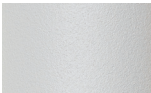
Once cleaned the fabric steam  
iron the fabric. Just use steam,  
be carefull NOT placeing the  
iron directly in the fabric it will  
get damage.

## Base & Legs Colour Options

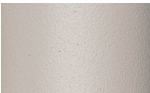
## Terrain Paints



Chalk  
721



Bone  
678



Tuff  
103



Mist  
773



Flint  
734



London Clay  
729



Mahogany  
100



Carbon  
737



Lilac  
104



Feldspar  
082



Sepia  
088



Terra Rossa  
087



Magma  
086



Terracota  
085



Sahara  
139



Camomile  
106



Aquamarine  
107



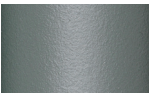
Cobalt  
089



Indigo  
094



Jade  
091



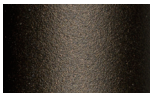
Onyx  
101



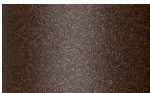
Juniper  
092



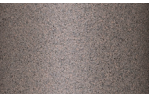
Amazon  
102



Bronze  
093



Corten  
727



Claystone  
741



Sand Storm  
132



Pumice  
131



Galena  
105



Manganese  
726

# Left corner 4 seater “connection- open”

Designer  
Rodolfo Dordoni

Collection  
Boma

Reference  
KS2502900

3/3

## Legs Options



Standard legs

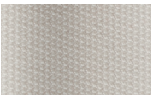


Crossed legs

## Accessories

Includes 1 link plate

## Fabric Colour Options



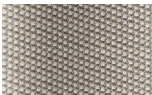
White Cliffs  
290



Dry Sand  
285



Porous Grey  
291



Limestone  
292



Fog  
289



Deer  
286



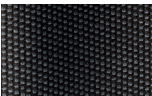
Wet Sand  
287



Cobblestone  
302



Cyprus Umber  
301



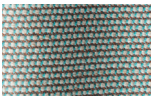
Loam  
297



Charcoal  
293



Arctic  
295



Fjord  
248



Cerulean  
314



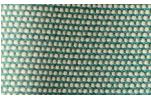
Caribbean  
298



Atlantic  
311



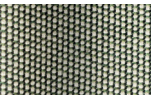
Rainforest  
312



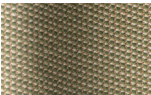
Lagoon  
249



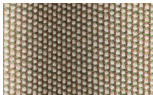
Cedar  
288



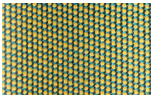
Moss  
296



Olive  
313



Autumn  
315



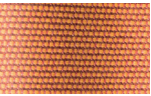
Summer Sky  
317



Golden Sand  
303



Flamma  
304



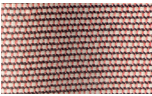
Sunrise  
299



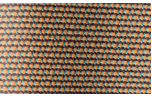
Saffron  
305



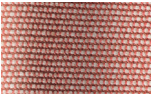
Burnt Sienna  
306



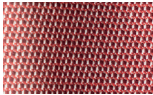
Ash Rose  
294



Cooper  
316



Dusk Pink  
307



Flamingo  
310



Coral  
309



Sandstone  
308

kettal