

Vieques

Central module

by Patricia Urquiola

**kettal**

# Central module

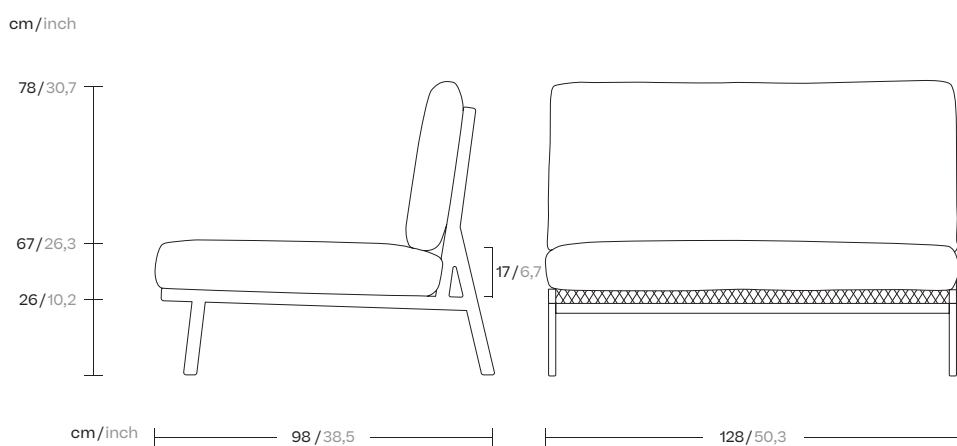
Designer  
Patricia Urquiola

Collection  
Vieques

Reference  
KS4100700

1/4

Kettal Vieques is a collection characterised by the combination of an aluminium frame with a new and revolutionary three-dimensional fabric, Nido d'Ape, with exceptional technical features, created especially for this collection and exclusively for Kettal.



kettal

# Central module

Designer  
Patricia Urquiola

Collection  
Vieques

Reference  
KS4100700

2/4

## Materials

### Aluminium

Antioxy, Heavy Load, Resistant En-1421, Kettalize-It, Anti-Scratch, Easy Clean, Flame Retardant M1, Eco Friendly Ecoembes Recycling Process

### Porotex Fabric Special, Laminated Fabric

Heavy Load 100.000 Cycles, Heavy Load Resistant 1000 Decitex, Kettalize-It, Resist U.v. En-581-4, Easy Clean, Abrasion, Resistance 30.000 Cycles, Quickdry

## Maintenance

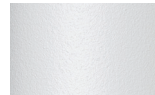
Clean with mild soap using sponge or cloth. Be gentle while cleaning, do not scrub aggressively the fabric. Once cleaned please make sure you remove soap excess.

In case of aggressive stains clean with diluted household bleach.

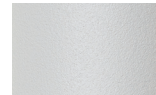
Clean stains promptly. The longer it remains, more difficult will be to remove.

Once cleaned the fabric steam iron the fabric. Just use steam, be carefull NOT placing the iron directly in the fabric it will get damage.

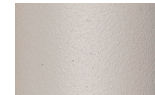
## Frame Colour Options



Chalk  
721



Bone  
678



Tuff  
103



Mist  
773



Flint  
734



London Clay  
729



Mahogany  
100



Carbon  
737



Lilac  
104



Feldspar  
082



Sepia  
088



Terra Rossa  
087



Magma  
086



Terracota  
085



Sahara  
139



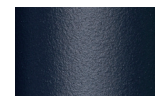
Camomile  
106



Aquamarine  
107



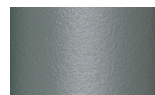
Cobalt  
089



Indigo  
094



Jade  
091



Onyx  
101



Juniper  
092



Amazon  
102



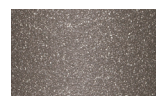
Bronze  
093



Corten  
727



Claystone  
741



Sand Storm  
132



Pumice  
131



Galena  
105



Manganese  
726

# Central module

Designer  
Patricia Urquiola

Collection  
Vieques

Reference  
KS4100700

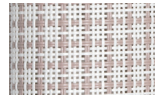
3/4

## Fabric Options

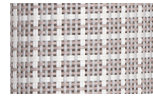
## Porotex Parallel Fabrics



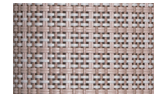
White Anemone  
527



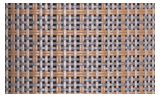
Lace Coral  
528



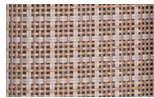
Padina  
564



Saline  
571



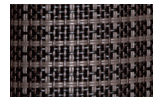
Alaria  
572



Sponge  
536



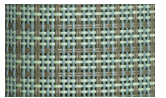
Fucus  
537



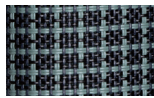
Urchin  
547



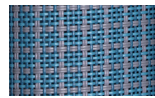
Kelp  
556



Turtle Grass  
553



Deep Ocean  
570



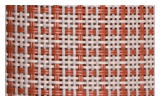
Winter Sea  
569



Xenia  
568



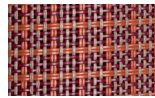
Plumaria  
567



Irish Moss  
559



Coral  
562



Dulse  
565

# Central module

Designer  
Patricia Urquiola

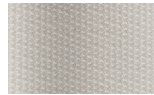
Collection  
Vieques

Reference  
KS4100700

4/4

Seat / Back / Arm Cushion  
Fabric Options

Terrain Fabrics Laminate



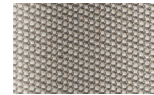
White Cliffs  
290



Dry Sand  
285



Porous Grey  
291



Limestone  
292



Fog  
289



Deer  
286



Wet Sand  
287



Cobblestone  
302



Cyprus Umber  
301



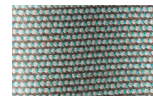
Loam  
297



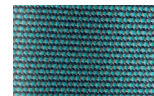
Charcoal  
293



Arctic  
295



Fjord  
248



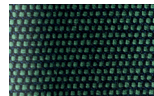
Cerulean  
314



Caribbean  
298



Atlantic  
311



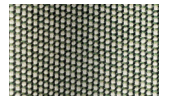
Rainforest  
312



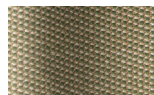
Lagoon  
249



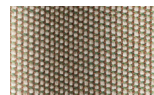
Cedar  
288



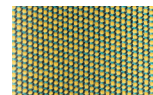
Moss  
296



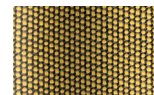
Olive  
313



Autumn  
315



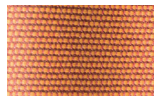
Summer Sky  
317



Golden Sand  
303



Flamma  
304



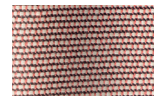
Sunrise  
299



Saffron  
305



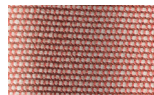
Burnt Sienna  
306



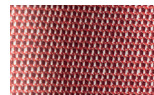
Ash Rose  
294



Cooper  
316



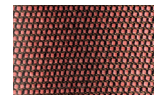
Dusk Pink  
307



Flamingo  
310



Coral  
309



Sandstone  
308