

Vieques

Left deckchair module

by Patricia Urquiola

kettal

Left deckchair module

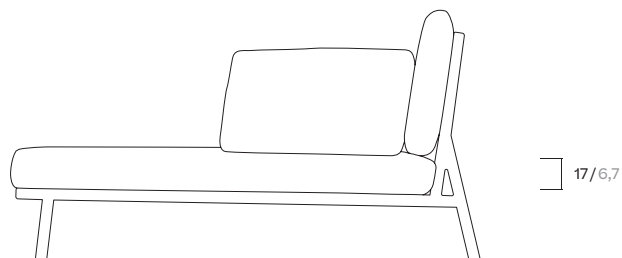
Designer
Patricia Urquiola

Collection
Vieques

Reference
KS4101000

1/4

cm/inch

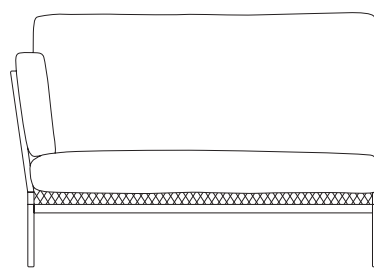


159/62,5

78/30,7

67/26,3

26/10,2



cm/inch

129/50,7

Kettal Vieques is a collection characterised by the combination of an aluminium frame with a new and revolutionary three-dimensional fabric, Nido d'Ape, with exceptional technical features, created especially for this collection and exclusively for Kettal.



kettal

Left deckchair module

Designer
Patricia Urquiola

Collection
Vieques

Reference
KS4101000

2/4

Materials

Aluminium

Antioxy, Heavy Load, Resistant
En-1421, Kettalize-It, Anti-
Scratch, Easy Clean,
Flame Retardant M1, Eco Friendly
Ecoembes Recycling Process

Porotex Fabric Special, Laminated Fabric

Heavy Load 100.000 Cycles,
Heavy Load Resistant 1000
Decitex, Kettalize-It,
Resist U.v. En-581-4, Easy Clean,
Abrasion, Resistance 30.000
Cycles, Quickdry

Maintenance

Clean with mild soap using
sponge or cloth. Be gentle
while cleaning, do not scrub
aggressively the fabric. Once
cleaned please make sure you
remove soap excess.

In case of aggressive stains
clean with diluted household
bleach.

Clean stains promptly. The
longer it remains, more difficult
will be to remove.

Once cleaned the fabric steam
iron the fabric. Just use steam,
be carefull NOT placing the
iron directly in the fabric it will
get damage.

Frame Colour Options

Terrain Paints



Chalk
721



Bone
678



Tuff
103



Mist
773



Flint
734



London Clay
729



Mahogany
100



Carbon
737



Lilac
104



Feldspar
082



Sepia
088



Terra Rossa
087



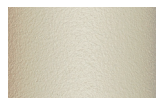
Magma
086



Terracota
085



Sahara
139



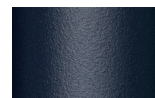
Camomile
106



Aquamarine
107



Cobalt
089



Indigo
094



Jade
091



Onyx
101



Juniper
092



Amazon
102



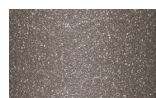
Bronze
093



Corten
727



Claystone
741



Sand Storm
132



Pumice
131



Galena
105



Manganese
726

Left deckchair module

Designer
Patricia Urquiola

Collection
Vieques

Reference
KS4101000

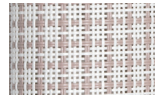
3/4

Fabric Options

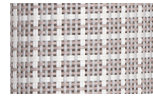
Porotex Parallel Fabrics



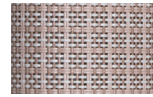
White Anemone
527



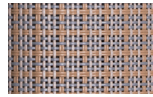
Lace Coral
528



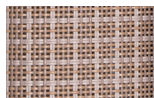
Padina
564



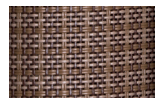
Saline
571



Alaria
572



Sponge
536



Fucus
537



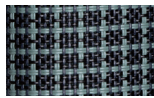
Urchin
547



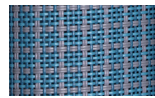
Kelp
556



Turtle Grass
553



Deep Ocean
570



Winter Sea
569



Xenia
568



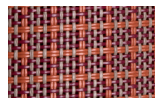
Plumaria
567



Irish Moss
559



Coral
562



Dulse
565

Left deckchair module

Designer
Patricia Urquiola

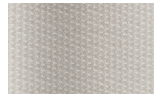
Collection
Vieques

Reference
KS4101000

4/4

Seat / Back / Arm Cushion
Fabric Options

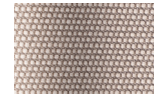
Terrain Fabrics Laminate



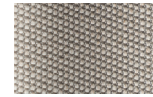
White Cliffs
290



Dry Sand
285



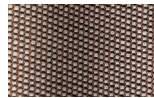
Porous Grey
291



Limestone
292



Fog
289



Deer
286



Wet Sand
287



Cobblestone
302



Cyprus Umber
301



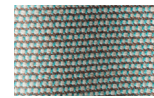
Loam
297



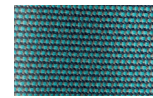
Charcoal
293



Arctic
295



Fjord
248



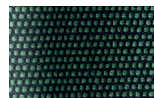
Cerulean
314



Caribbean
298



Atlantic
311



Rainforest
312



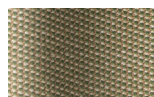
Lagoon
249



Cedar
288



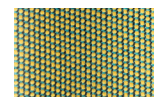
Moss
296



Olive
313



Autumn
315



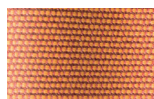
Summer Sky
317



Golden Sand
303



Flamma
304



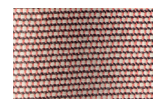
Sunrise
299



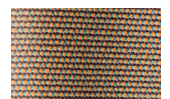
Saffron
305



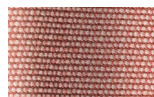
Burnt Sienna
306



Ash Rose
294



Cooper
316



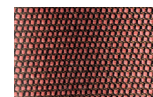
Dusk Pink
307



Flamingo
310



Coral
309



Sandstone
308